

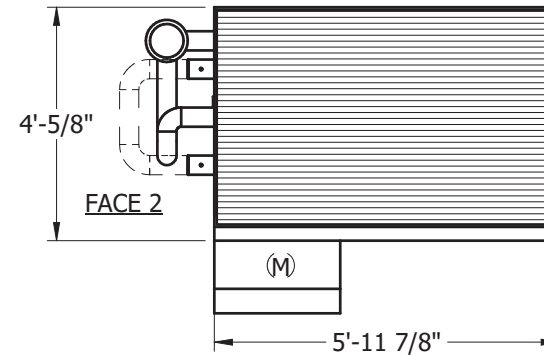
EVAPCO, INC.



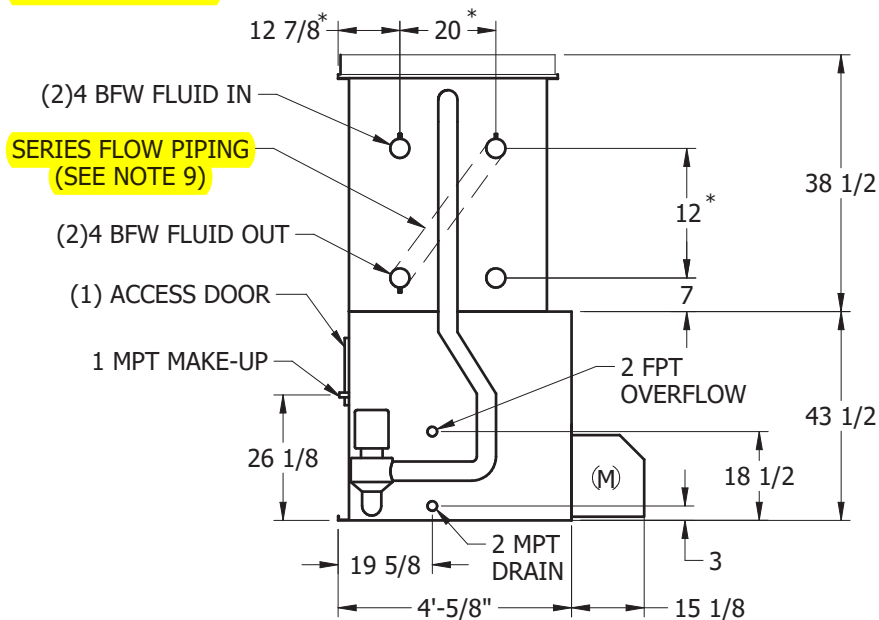
UNIT	CLOSED CIRCUIT COOLER	MODEL #	LSWA-20AA -2	SCALE	NTS	DWG. #	WL040604-ERE-SF	REV.	-	DATE	8/20/2008	SERIAL #	8-346842
------	------------------------------	---------	--------------	-------	-----	--------	-----------------	------	---	------	-----------	----------	----------

NOTES:

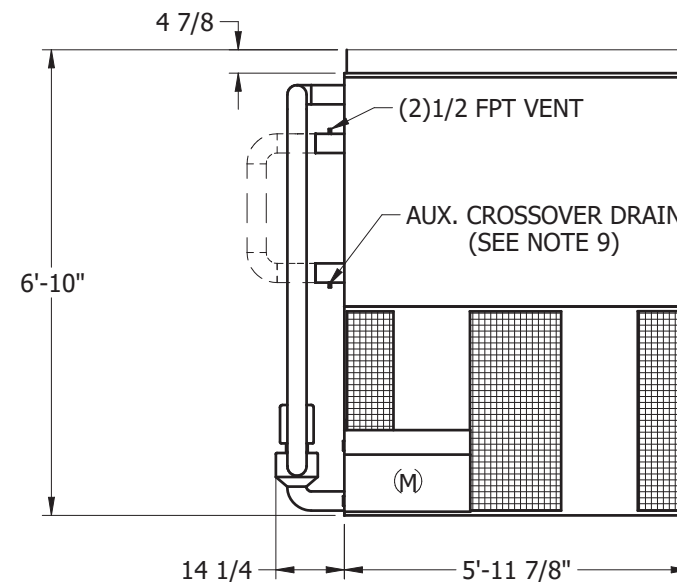
1. (M)- FAN MOTOR LOCATION
2. HEAVIEST SECTION IS COIL SECTION
3. MPT DENOTES MALE PIPE THREAD
FPT DENOTES FEMALE PIPE THREAD
BFW DENOTES BEVELED FOR WELDING
4. + UNIT WEIGHT DOES NOT INCLUDE ACCESSORIES (SEE SEPARATE DRAWINGS FOR ACCESSORIES)
5. 3/4" DIA. MOUNTING HOLES. REFER TO RECOMMENDED STEEL SUPPORT DRAWING
6. MAKE-UP WATER PRESSURE-20 psi MIN, 50 psi MAX
7. * - APPROXIMATE DIMENSIONS DO NOT USE FOR PRE-FABRICATION OF CONNECTING PIPING.
8. MAKE-UP IS LOCATED 7 5/8" FROM CONNECTION END OF UNIT
9. SERIES FLOW PIPING AND AUX. CROSSOVER DRAIN ARE BY OTHERS



FACE 1
PLAN VIEW



FACE 2



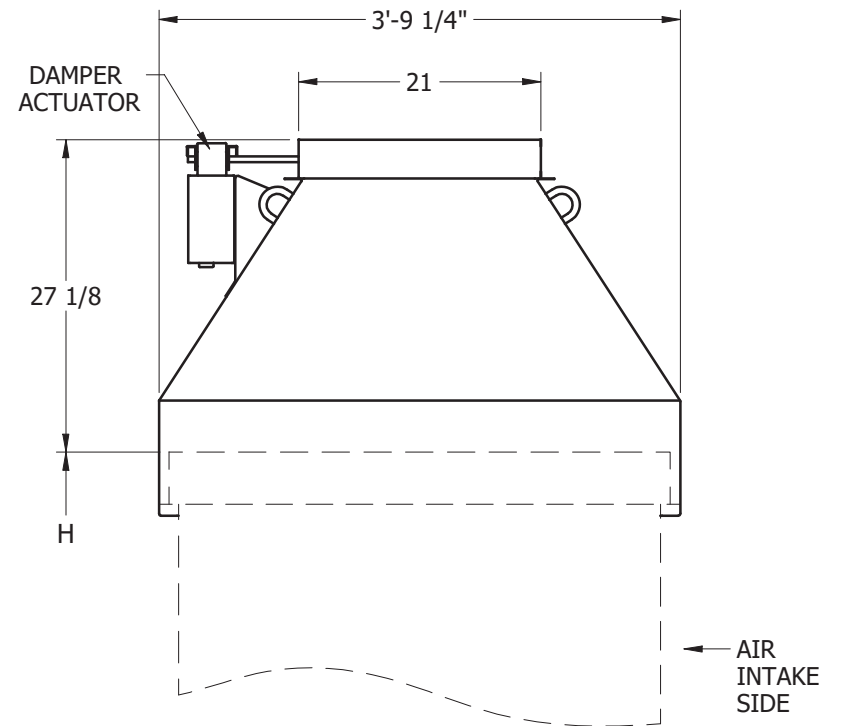
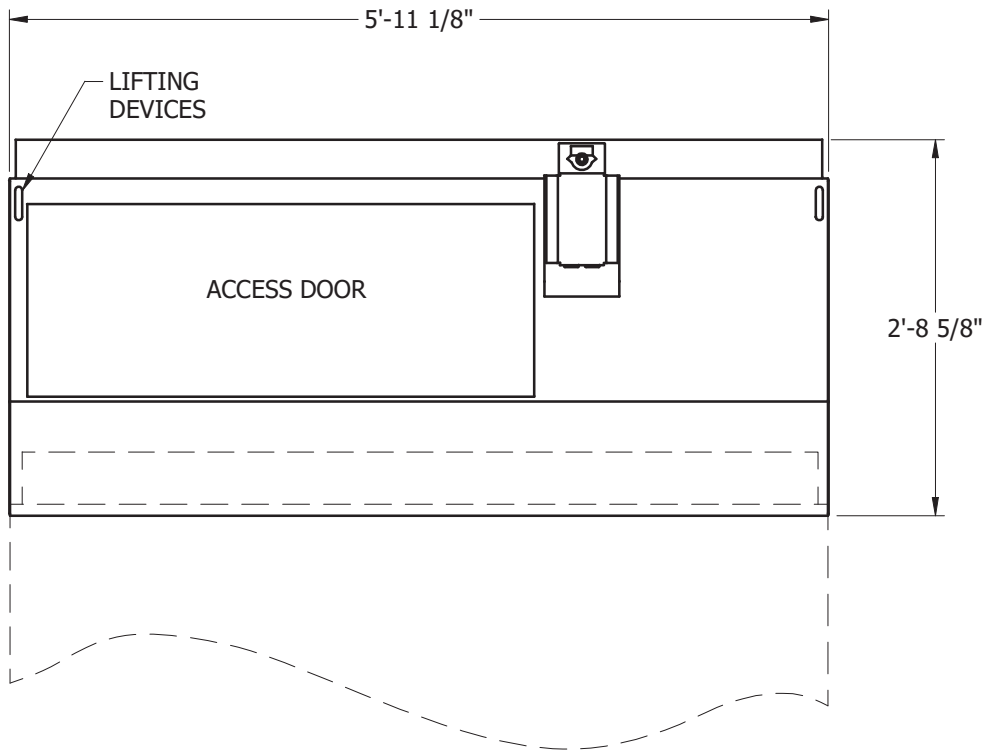
FACE 1

SHIPPING WEIGHT	2250	lbs. +	OPERATING WEIGHT	3310	lbs.	HEAVIEST SECTION WEIGHT	2250	lbs.	NO. OF SHIPPING SECTIONS	1
-----------------	------	--------	------------------	------	------	-------------------------	------	------	--------------------------	---

EVAPCO, INC.



TITLE	TAPERED DSCH HOOD W/DAMPERS	UNIT:	ALL 4X6 LS UNITS	DWG. #	TDAC0406EA	SERIAL #	
-------	------------------------------------	-------	------------------	--------	------------	----------	--



1. TOTAL HEIGHT OF UNIT WILL BE 27 1/8" PLUS HEIGHT (H) FROM UNIT CERTIFIED.
2. WEIGHT OF HOOD IS 285 LBS.
3. WEIGHT IS FOR HOOD ONLY. THE ELIMINATOR WEIGHT IS INCLUDED IN THE SHIPPING WEIGHT ON THE CERTIFIED.
4. ELIMINATORS ARE SHIPPED INSIDE OF HOOD.
5. DAMPER IN FULLY OPEN POSITION, ADD 3" TYP. TO OVERALL HOOD HEIGHT.
6. DAMPER LINKAGE AND ACTUATORS ARE FACTORY ASSEMBLED.
WIRING AND ACTUATOR CONTROLS FURNISHED BY OTHERS.
120 VOLT POWER SUPPLY REQUIRED.

EVAPCO, INC.



TITLE

RECOMMENDED SERIES FLOW CROSSOVER PIPING ARR

UNIT:

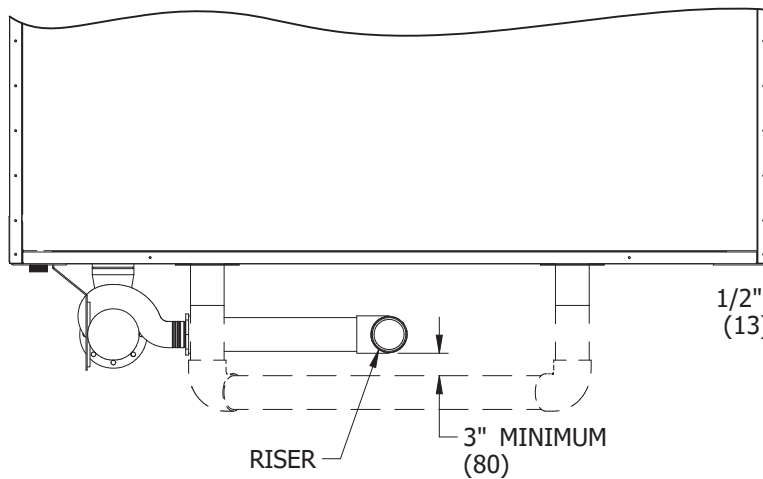
LRW, LSW, ATW, UBW, PMW

DWG. #

XPAC0000-DRA-ST

NOTES:

1. THIS DRAWING IS INTENDED TO PROVIDE CROSSOVER GUIDELINES ONLY.
2. FOR PIPE MATERIAL, REFERENCE BID SPECIFICATIONS.
3. REFERENCE CERTIFIED PRINT FOR COIL CONNECTION DIAMETER AND TYPE.



VIEW A-A

