

ACAV SERVICES

September 16, 2019



INVOICE 0916191

Bill To		Ship To	
Customer	International Support Group M Merchan	Recipient	99 RSC DPW R Linn
Customer ID#	NY023	Address	Ernie Pyle USARC BLDG 206 Ft Totten NY
Address	9050 Pines Blvd STE 150 Pembroke Pines FL 33024	Phone	718 631 6188
Phone	718 790 3562		
Payment Due	NET 30	Delivery Date	September 10, 2019
Salesperson	JW	Shipping Method	N/A
Payment Terms	CC	Shipping Terms	N/A

Qty.	Item#	Description	Unit Price	Line Total
1	1	Inspected 21 boilers at Ft Totten NY023 in compliance with NYC Local Law 62/91 and New York State Sec 204 of NYS Labor Law and The National Fuel Code. See attached Report and Photos		
		21 @ \$270.00 per Boiler		\$5670.00
		TOTAL		\$5670.00

ACAV Services

11 Snug Cove Lane
Bayville NY 11709
Jacka377@verizon.net
516 941 6581

BUILDING 123

3 Boilers...2 -TRIAD Boilers model EOPS-1600 SH

with Power Flame Burners Model CR2-GO-20B

1-AO Smith Boiler model COBT 300

with a Power Flame Burner Model CR1-GO-10

All boilers code compliant, boiler room code compliant

Condition good.

BUILDING 128

2 Boilers ...2-HB Smith model 19HE-04

with Power Flame Burner Model LNICR1-G-10

All boilers code compliant,

Heating pipe needs to be insulated.

Boiler room has violations, needs to be sealed. The ceiling has holes.

Boiler condition is good.

BUILDING 206

4 Boilers...3-ATH (Advanced Thermal Hydronics) model KN4

1 ATH (Advanced Thermal Hydronics) model KN2

One boiler requires a top access cover.

Other boilers are code compliant and in good condition.

Boiler room is compliant

BUILDING 319

1 Boiler...1-Weil Mclain Model 780

BUILDING 319 Continued...

With a Carlin Burner model 702 CRD

1 Hot water Heater...Bock model 51E

With a Carlin Burner EZ-1

Boiler and Hot water heater are code compliant and are in good condition

Heating pipe in the boiler room needs insulation.

Barometric (6 inch) air damper needs to be moved on the water heaters exhaust Vent.

The electrical outlets in the boiler room needs to be GFI type.

BUILDING 330

"A" side

2 Boilers...1-HB Smith 28 Series Model HE-8

with a Carlin Burner 801.

1-Slant Fin Boiler EC-16p

with a Riello Burner model 40

Both boilers are code compliant and are in good condition

Boiler room needs general clean up.

"B" side

2 Boilers ...1-HB Smith 28 Series Model HE- 8

With a Carlin Burner 801.

1 Slant Fin Boiler EC-16p

With a Riello Burner model 40

Both boilers are code compliant and are in good condition.

BUILDING 330

"B" side continued...

Boiler room need general clean up

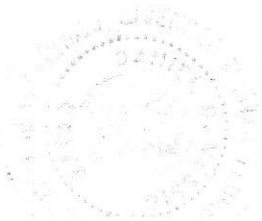
Remove cardboard boxes.

Total boilers inspected 21.

Respectfully,



Daniel D. Vessio



CERTIFICATION OF WORK
(To be completed by the Contractor and saved in the Contractor's CMMS)

FACID/Building: NY 023 Date of Visit: 9/10/19

Contractor Personnel on Site:

1. I work 2. Don vest

Work Performed:

Preventive Maintenance -(Annual, Quarterly, Monthly, equipment identification, etc.)
Service Orders -

[illegible]

CERTIFICATION OF WORK

To be signed by the Contractor:

Print Name: JOHN WOLAN Date: 9/14/19

Signed: 

To be signed by Facility Manager:

I certify that the above named individuals representing the Contractor arrived on site and to the best of my knowledge, completed the stated work listed:

Print Name/Rank: Louis Corbo Date: 9/10/14

Signed: [Signature]

E-Mail: Louis-A-Corbo-CTR@mail.mil


ATH
ADVANCED THERMAL HYDRONICS

#1

KN2

HeatNet
Cabinet

60-5638-B

made in the USA

Beyartown, PA

DWH-B-1
DWG#TC1.9
B200



Equipment is provided by Con Edison

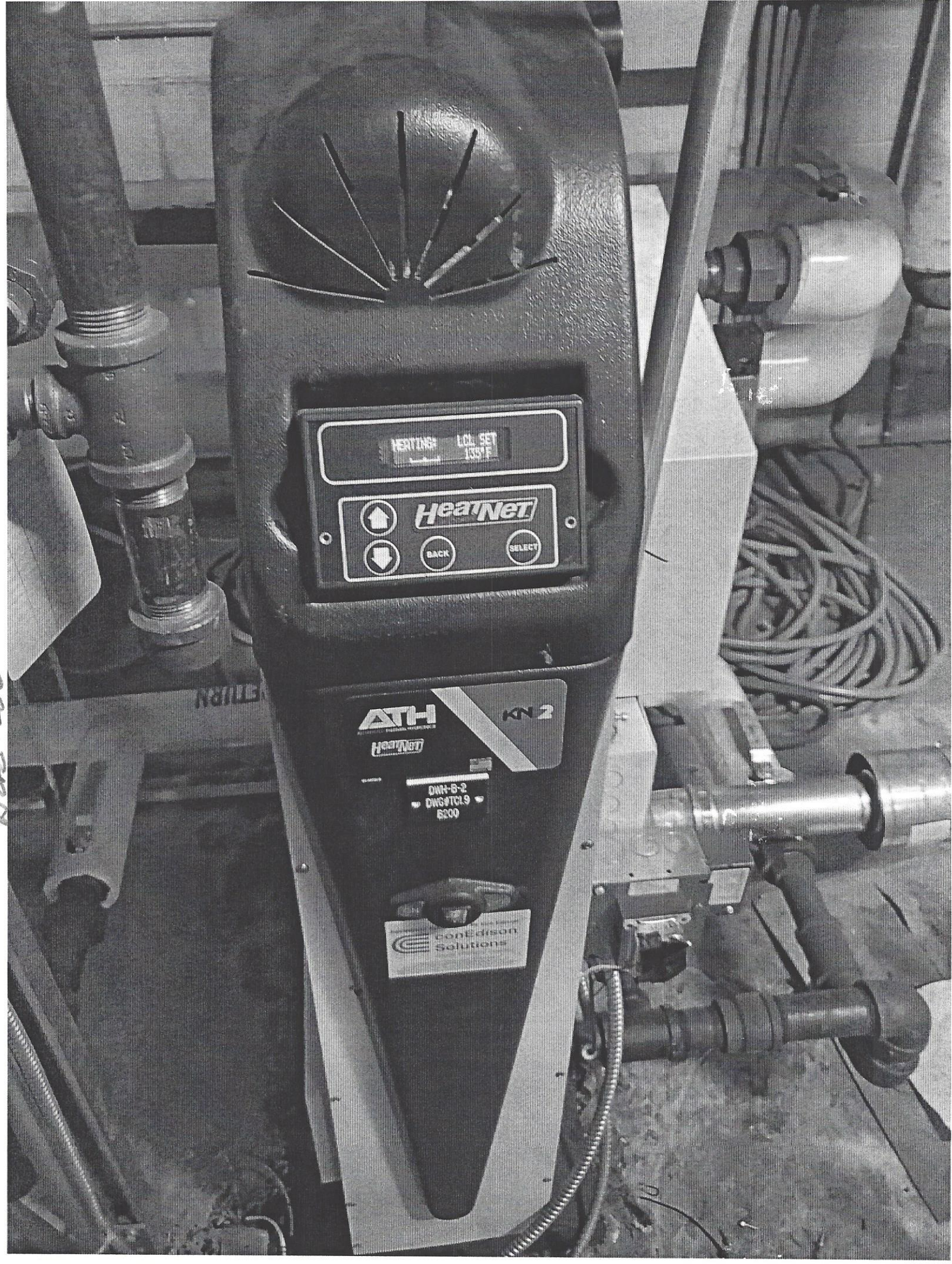


conEdison
Solutions

Energy Efficiency Expert

002 5M11

002 15718



HEATING LOL SET 130°F



HeatNet



BACK

SELECT

ATH
HeatNet

KN2

DWH-S-2
DWS4TCL9
6200

conEdison
Solutions

KN16
SERIES

B-1
DWG#TC1.9
B200



LOCAL



REMOTE

ON



OFF
CABINET
LIGHT

POWER



LOW WATER



TEST



MANUAL
RESET



LOW-WATER CUTOFF

B2-00331-021-A

made in the USA
Superior, PA

POWER



ON

OFF

KN16
SERIES

B-2
DWG#TC1.9
B200

LOCAL
REMOTE

ON
OFF
CABINET
LIGHT

POWER
TEST

LOW WATER

MANUAL
RESET

LOW-WATER CUTOFF

92-0001-001 A

Made in the USA
Bryn Mawr, PA

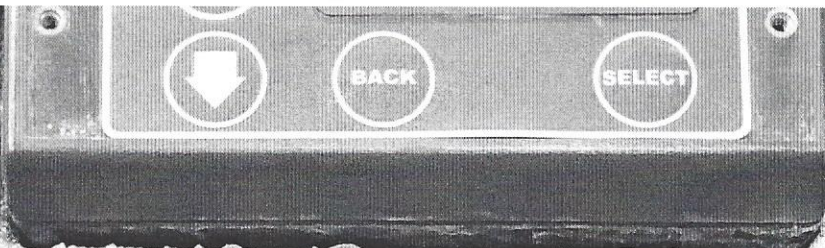
POWER

ON
OFF

B200 200



BLOS 117 NYD23



B-2
DWG#TC1.3
B118



Bldg 118 NY023