



Date: 10/4/2023  
Facility ID: PA035  
Work Order #: 14051  
Boiler ID: #2 6590

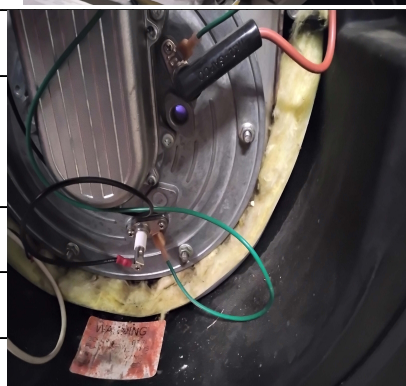
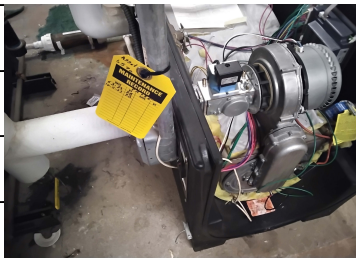
## Seasonal Start Up - Boiler PM Inspection Worksheet

1. Verify full boiler
2. Test the safety/relief valve after startup (full pressure test)
3. Clean or replace the fuel filters
4. Clean the fuel nozzles
5. Inspect, clean and functionally test the flame scanner and flame safeguard relay
6. Clean and adjust the ignition electrode
7. Replace the vacuum tube in flame safeguard control, if applicable
8. Perform pilot turn down test
9. Verify proper water flow through the boiler
10. Perform visual combustion test and adjust the burner for maximum efficiency
11. Test all safeties to verify burner shutdown

### INSPECTION NOTES:

Inspected boiler cleaned flame sensor tested for blue flame tested pressure switch and low water cutout switch

And unwired other switches to shut down boiler and run boiler Safety switches tested out



### CSS TICKETS NEEDED: