



Date: 10/2/23  
Facility ID: VA001  
Work Order # 14072  
Boiler ID #6522 & 6681

## **Comprehensive Annual Boiler PM Inspection Worksheet**

### **1. General Assembly**

- a. Secure all circuits: electrical, gas, steam water and blowdown and drain boiler
- b. Open the fire and water side for inspection
- c. Clean as required, including scale through the handholes
- d. Check surfaces and water side for corrosion, pitting, scale, blisters bulges and soot
- e. Inspect the refractory
- f. Check the expansion tank and air vents, drain if needed
- g. Clean the fire inspection glass
- h. Check blow-down valve packing and lubricate
- i. Check and test boiler blow-down valve
- j. Perform hydrostatic test, if required
- k. Reassemble and pressure test at operating pressure

### **2. Gas Train Burner Assembly**

- a. Check the gas train isolation valves for leaks
- b. Check the gas supply piping for leaks
- c. Check the gas pilot solenoid valve for wear and leaks
- d. Check main gas and pilot gas regulators for wear and leaks. Note any oil leaks from actuator
- e. Test the low gas pressure switch. Calibrate and record setting.
- f. Test the high gas pressure switch. Calibrate and record setting
- g. Verify the operation of the burner fan air flow switch
- h. Inspect and clean the burner assembly
- i. Inspect and clean the pilot igniter assembly. Calibrate the electrode
- j. Inspect and clean the burner fan and air intakes
- k. Inspect the flue and flue damper. Verify free damper operation.

### **3. Burner Control Panel**

- a. Inspect the panel for cleanliness
- b. Inspect wiring and connections for tightness and signs of overheating/discoloration
- c. Clean burner fan wheel and air dampers. Check fan for vibration.
- d. Verify tightness of the linkage set screws
- e. Check the gas valves against leakage (where test cocks are provided).

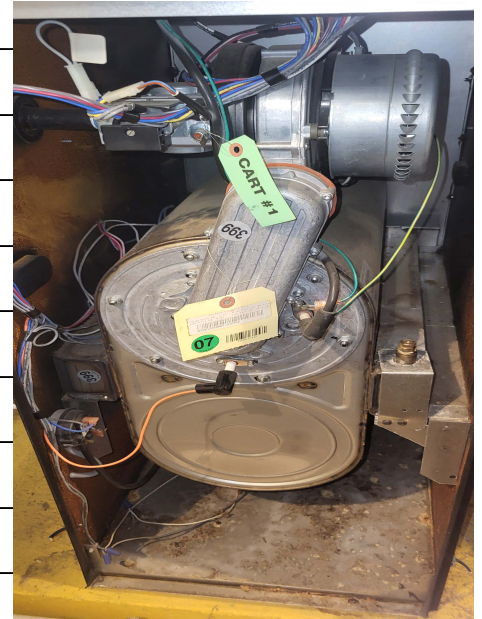
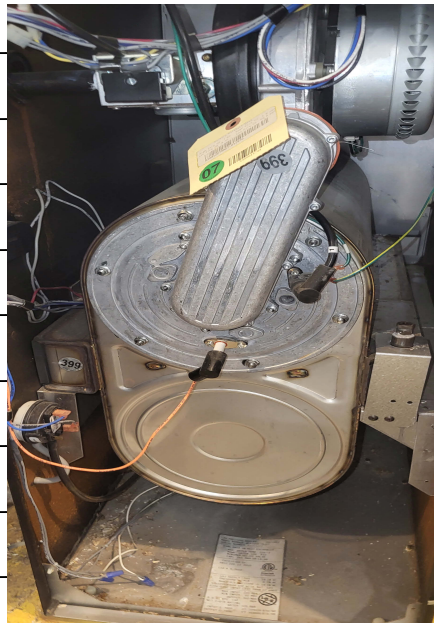
#### 4. Controls and Safeties

- Disassemble, inspect, and clean the low water cutoff safety device. Verify free movement of components
- Reassemble the boiler low water cutoff safety device with new gaskets and specialty bolts
- Remove plugs in piping above and below low water cutoff and inspect piping
- Clean the contacts in the program timer, if applicable
- Check the operation of the low water cutoff safety device and feed controls.
- Verify the setting and test the operations of the operating and limit controls

#### INSPECTION NOTES:

2 Piece Burnham Alpine Boiler check out well with no issues.

-AS



#### CSS TICKETS NEEDED:

No CSS Needed at this time.

-AS

