

**Region:** 5

**Location:** VA006

**CSS #:** 13430

**Maximo Work Order No.:** 10131

**Asset #:** NA

**Date Issued:** 10/08/19

**Original Description:**

Replace old water cooler with new water bottle filling station (without filter). The water cooler at VA006 is old and drips water on the floor when used

**Repairs Needed:**

Moore's is proposing to install a new water cooler, with bottler filler. Will demo the existing block wall enough to adjust the heights of the existing plumbing, in order to accomodate a new water cooler. Once the wall is open and plumbing is accessible, will rough in new waste and water. Will hang new water cooler/bottle fill station, then turn on water. Will then test for proper operation. \*\*Due to uncertainty regarding of size of fittings and piping within the wall, a miscellaneous cost will proposed. \*\*

**RS Means Line Buildup and Labor Summary (Data Version 2017, Q4):**

Quantity	Line Item Number	Description	Labor Hours	Labor Rate/Hr	Materials	Equipment	Total
--	NA	Materials (See attached detail)	--	--	\$1,818.21	--	\$1,818.21
--	NA	Moore's Labor (includes Diagnostic)	16	\$120.00	--	--	\$1,920.00
--	NA	TW Oversight and Coordination	4	80	--	--	\$320.00

**Estimate Summary:**

Labor Hours	Labor Cost	Materials	Equipment	Total Cost	CE Factor	Total Estimate
20	\$2,240.00	\$1,818.21	\$0.00	\$4,058.21	100%	<b>\$4,058.21</b>



24 Hour Service: 800.789.7199  
Fax: 888.722.2712  
MooreElectric.com  
Corporate Office:  
101 Edgewood Avenue • Altavista, VA 24517

Over 100 Technicians Serving the Entire States of Virginia & North Carolina | Lynchburg | Charlottesville | Chesapeake | Richmond | Manassas | Charlotte | Raleigh | Reidsville

## Proposal

December 10, 2019

Quotes are valid for 30 days.

USARC - VA # 006 Charlottesville  
1634 Cherry Avenue  
Charlottesville VA 22903  
Email

[tina.lee@tideh2o.net](mailto:tina.lee@tideh2o.net)

Contact Name Tina Lee & Adam Colopy  
Telephone  
Cell Phone 614-623-9569

### DESCRIPTION OF EQUIPMENT:

Water Cooler w/ Bottle Filler Station

### DESCRIPTION OF PROBLEM:

Customer has requested a proposal to install a new water cooler with a bottle filler station.

### DESCRIPTION OF REPAIRS:

Moore's is proposing to install a new water cooler, with bottler filler. Will demo the existing block wall enough to adjust the heights of the existing plumbing, in order to accomodate a new water cooler. Once the wall is open and plumbing is accessible, will rough in new waste and water. Will hang new water cooler/bottle fill station, then turn on water. Will then test for proper operation.

\*\*Due to uncertainty regarding of size of fittings and piping within the wall, a miscellaneous cost will be proposed. \*\*

#### \*Items Not Included\*

- 1- Bond
- 2- Utility fees
- 3- Rock removal and offsite backfill
- 4- Responsibility for unsuitable soil
- 5- Roof openings, flashing and blocking
- 6- Patching
- 7- Painting
- 8- Telephone, CATV, and Data wiring
- 9- Lintels required for HVAC openings

If you have any questions about our proposal, or if we can be of any further assistance, please do not hesitate to call us.

Customer is responsible for any and all restocking charges that apply should the quote be cancelled after Moore's has received approval.

### MATERIAL, EQUIP OR PARTS

Water Cooler w/ Bottle Filler  
Miscellaneous Material/Hardware/Fittings  
Pro Press Fee  
Material Tax  
Truck Fee

Quantity		Sell price
1.00	\$	1,363.24
1.00	\$	240.00
1.00	\$	75.00
1.00	\$	84.97
1.00	\$	55.00
Material Total		\$ 1,818.21

### LABOR ITEMIZED

Labor - Incurred 5  
Labor - One Man 11

		Labor
\$ 120.00	\$	600.00
\$ 120.00	\$	1,320.00
Labor Total		\$ 1,920.00

Thank you for your business. If you have any questions or concerns, please feel free to contact us via telephone or [quotes@mooreselectric.com](mailto:quotes@mooreselectric.com)

Materials	\$	1,818.21
Labor	\$	1,920.00
<b>TOTAL</b>	<b>\$</b>	<b>3,738.21</b>

Robert Lowery, Changeout Estimator 434-309-2591  
Amy Hockaday, Estimator 434-309-2569  
James Davis, Estimator 434-309-2568  
Adam Barker, Estimator 434-369-3514  
Jared Underwood, Estimator 434-306-2446

Approved by: \_\_\_\_\_

#### Standard Terms and Conditions

Payments past 30 days are subject to 1.5% monthly service charge on unpaid balance. Additional charges for payments made through credit cards may apply. Late payments sent to collections or legal process the purchaser agrees to pay all costs, expenses, and reasonable attorney fees.

# Price Quotation # B897136

## FERGUSON ENTERPRISES LLC #31

505 GARRETT STREET  
CHARLOTTESVILLE, VA 22902-5693

Phone : [434-971-7000](tel:434-971-7000)  
Fax : [434-977-5586](tel:434-977-5586)

Bid No.....: B897136  
Bid Date...: 12/10/19  
Quoted By: EAJ  
Customer.: MOORES ELECT & MECH CONST INC  
MOORES MAIN ACCOUNT  
101 EDGEWOOD AVENUE  
P0 BOX 119  
ALTAVISTA, VA 24517  
Cust PO#...:  
Cust Phone: [434-369-4374](tel:434-369-4374)  
Terms.....: 2% 10TH NET 25TH  
Ship To.....: MOORES ELECT & MECH CONST INC  
MOORES MAIN ACCOUNT  
101 EDGEWOOD AVENUE  
P0 BOX 119  
ALTAVISTA, VA 24517  
Job Name.: WATER COOLER W/BOTTL

Item	Description	Quantity	Net Price	UM	Total
EEZS8WSLK	LF EZH20 8 GPH L/ FLTR	1	1136.025	EA	1136.03

Subtotal: \$1136.03

Inbound Freight: \$0.00

Tax: \$60.21

Order Total: \$1196.24

Quoted prices are based upon receipt of the total quantity for immediate shipment (48 hours).  
SHIPMENTS BEYOND 48 HOURS SHALL BE AT THE PRICE IN EFFECT AT TIME OF SHIPMENT UNLESS NOTED OTHERWISE. QUOTES FOR PRODUCTS



APPROVAL: \_\_\_\_\_

EMABF, LMABF, VRC, LVRC models

In keeping with our policy of continuing product improvement, Elkay reserves the right to change product specifications without notice. Please visit [elkay.com](http://elkay.com) for the most current version of Elkay product specification sheets. This specification describes an Elkay product with design, quality, and functional benefits to the user. When making a comparison of other producers' offerings, be certain these features are not overlooked.

Elkay REV 07182019  
Ezs8wslk

2222 Camden Court  
Oak Brook, IL 60523

© 2019 Page 1  
Ezs8wslk\_spec.pdf

ELKAY<sup>®</sup>  
SPECIFICATIONS

Elkay EZH2O Bottle Filling Station with Single ADA Cooler  
Non-Filtered 8 GPH Light Gray  
Model EZS8WSLK

- Refrigerant Control: Refrigerant R-134a is controlled by accurately calibrated capillary tube.
- Temperature Control: Easily accessible enclosed adjustable thermostat is factory preset. Requires no adjustment other than for altitude requirements.

**IMPORTANT! INSTALLER PLEASE NOTE :**

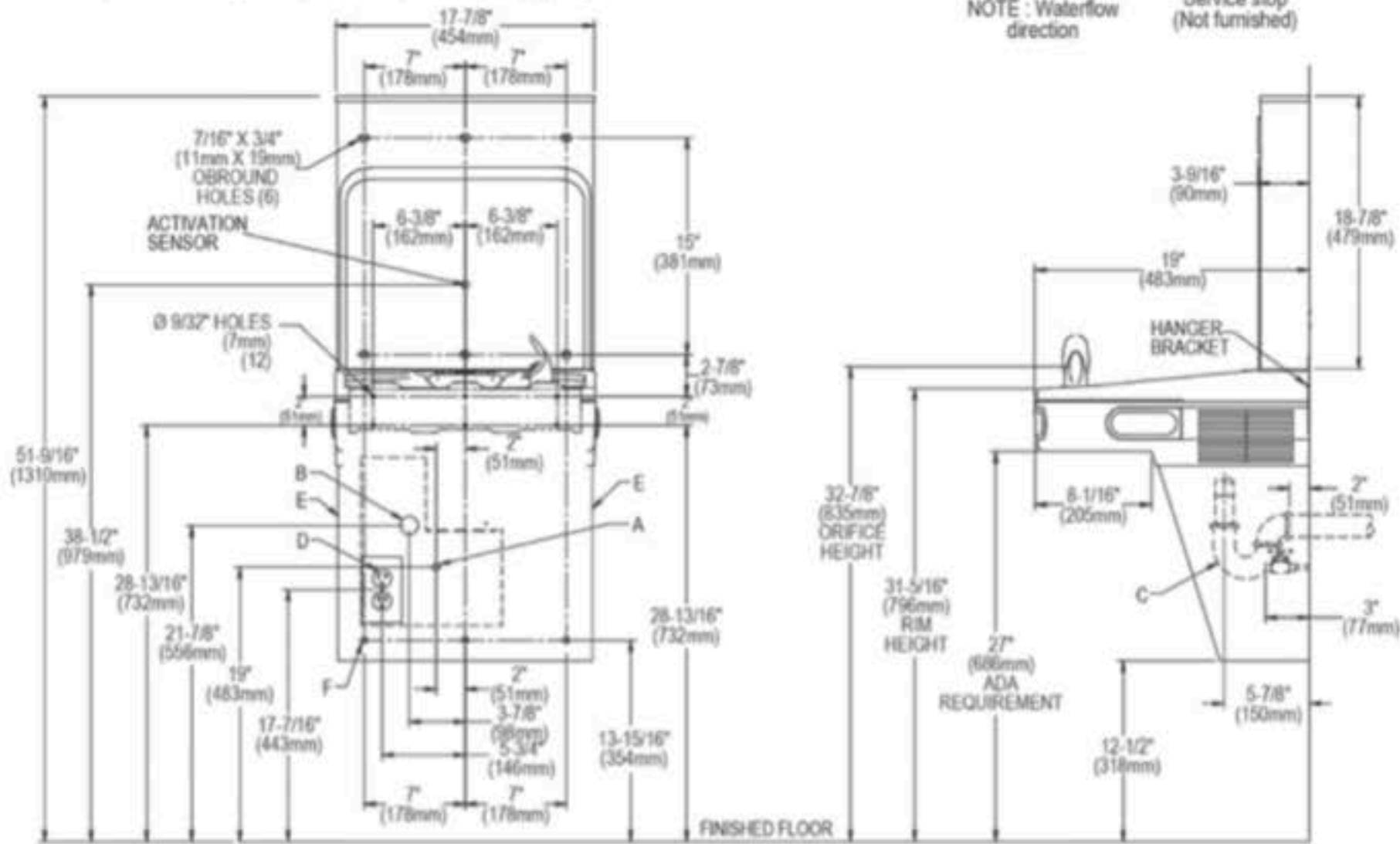
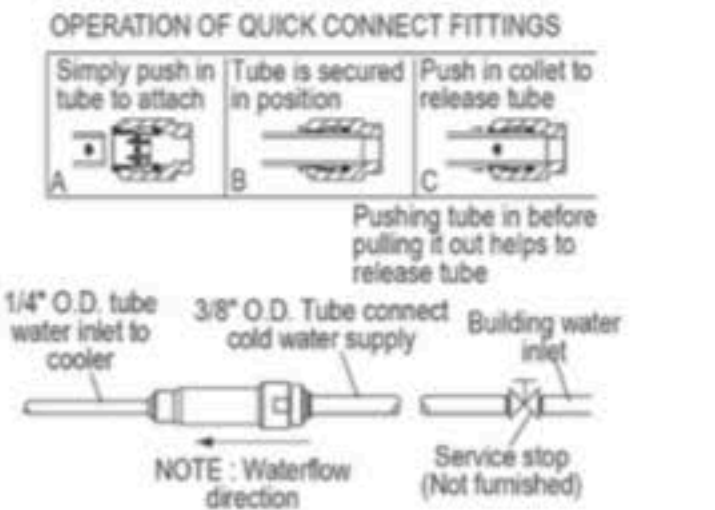
This water cooler has been designed and built to provide water to the user which has not been altered by materials in the cooler waterways. The grounding of electrical equipment such as telephone, computer, etc. to water lines is a common procedure. The grounding may be in the building but may also occur away from the building. This grounding can cause electrical feedback into a water cooler creating an electrolysis which creates a metallic taste or causes an increase in the metal content of the water. This condition is avoidable by installing the cooler using the proper materials as shown below.

**NOTICE**

This water cooler must be connected to the water supply using a dielectric coupling. The cooler is furnished with a non-metallic strainer which meets this requirement. The drain trap which is provided by the installer should also be plastic to completely isolate the cooler from the building plumbing system.

Bottle filler unit on bracket attached to wall by 6 holes (as shown). Water and electrical will connect through pre-punched hole in basin.

These products are designed to operate on 20 psi to 105 psi supply line pressure.



LEGEND:

REDUCE HEIGHT BY 3 INCHES FOR INSTALLATION OF CHILDRENS ADA COOLER

A = Recommended Water Supply location. Shut-off Valve (not furnished) to accept 3/8" O.D. unplated copper tube. Up to 3" (76mm) maximum out from wall.

B = Recommended Waste Outlet location. To accommodate 1-1/4" nominal drain. Drain stub 2" (51mm) out from wall.

C = 1-1/4" Trap (not furnished).

D = Electrical Supply (3) Wire Recessed Box Duplex Outlet.

E = Insure proper ventilation by maintaining 6" (152mm) minimum clearance from cabinet

F = 7/16" (11mm) Bolt Holes for fastening to wall.

Note : New installations Must Use Ground Fault Circuit Interrupter (GFCI). It is highly recommended that the circuit be dedicated and the load protection be sized for 20 amps.

In keeping with our policy of continuing product improvement, Elkay reserves the right to change product specifications without notice. Please visit [elkay.com](http://elkay.com) for the most current version of Elkay product specification sheets. This specification describes an Elkay product with design, quality, and functional benefits to the user. When making a comparison of other producers' offerings, be certain these features are not overlooked.

Elkay REV 07182019  
Ezs8wslk

2222 Camden Court  
Oak Brook, IL 60523

© 2019 Page 2  
Ezs8wslk\_spec.pdf





