

**Region:** 5

**Location:** MD002

**CSS #:** 35138

**Maximo Work Order No.:** 16899

**Asset #:** NA

**Date Issued:** 04/26/2022

**Original Description:** Repair to sure logic surge device in bldg 004 electrical room.

**Repairs Needed:**

S&S proposes to remove and replace (3) modules in the surge logic device in bldg 004 electrical room.

**RS Means Line Buildup and Labor Summary (Data Version 2017, Q4):**

Quantity	Line Item Number	Description	Labor Hours	Labor Rate/Hr	Materials	Equipment	Total
--	NA	Materials	--	--	\$2,299.38	--	\$2,299.38
--	NA	SS Labor (Includes Diagnostic)	11.5	\$100.00	--	--	\$1,150.00
--	NA	TW Coordination	4	\$80.00	--	--	\$320.00

**Estimate Summary:**

Labor Hours	Labor Cost	Material Cost	Equipment	Total Cost	CE Factor	Total Estimate
15	\$1,470.00	\$2,299.38		\$3,769.38	106%	<b>\$3,995.54</b>



# S&S MECHANICAL

**S&S Mechanical**  
4831 South Crain Highway  
Upper Marlboro, MD 20772

Tel. 1 - (301) 574-1555  
Fax. 1 - (301) 574-1558  
www.sandsmidatlantic.com

## CUSTOMER QUOTATION NO. 953

Tidewater, Inc.  
Tidewater, Inc  
6625 Selnick Dr.  
Suite A  
Elkridge MD 21075

**Quote Name:** 16899  
**Quote No:** 953  
**Site:** MD002 Ordnance Road  
**Site Contact:**  
**Salesperson:** Lindsay Ruby  
**Created Date:** 03/23/2022  
**Valid For:** 30 Day(s)

**WO#: 16899**

**CSS Ticket Number: 35138**

**Problem:** Repair to sure logic surge device in bldg 004 electrical room.

S&S proposes to remove and replace (3) modules in the surge logic device in bldg 004 electrical room.

### Service

Item	Quantity	Unit Price	Total
SQD MA41MA16 277V 160KA	3.00	\$766.46	\$2,299.38
Diagnosis Fee	1	\$350.00	\$350.00
HVAC Labor Rate	8	\$100.00	\$800.00
<b>Sub-Total ex Tax</b>			\$3,449.38
<b>Tax</b>			\$0.00
<b>Total inc Tax</b>			\$3,449.38

<b>Labor</b>	\$1,150.00
<b>Materials</b>	\$2,299.38
<b>Sub-Total ex Tax</b>	\$3,449.38
<b>Tax</b>	\$0.00
<b>Total inc Tax</b>	\$3,449.38



**CAPITAL ELECTRIC**  
**600 W HAMBURG ST**  
**BALTIMORE, MD 21230-2682**  
**410-752-4080**

**nichon.skinner@capitalelectricsupply.com**

QUOTE TO:  
 S&S FABRICATORS INC  
 4845 SOUTH CRAIN HWY  
 UPPER MARLBORO, MD 20772-3109  
 240-882-1660

SHIP TO:  
 S&S FABRICATORS INC  
 4845 SOUTH CRAIN HWY  
 UPPER MARLBORO, MD 20772-3109  
 240-882-1660

## Quotation

QUOTE DATE	QUOTE NUMBER
04/26/22	S047957182
PAGE NO.	
1 of 1	

CUSTOMER NUMBER		CUSTOMER ORDER NUMBER		JOB NAME		QUOTED TO	
132423		MD002		14160		Lindsay	
SALESPERSON		SHIP VIA		FREIGHT ALLOWED		EXPIRATION DATE	
NICHON SKINNER		WC WILL-CALL		No		11:59pm ET 05/11/22	
ORDER QTY	UPC	DESCRIPTION			UNIT PRICE	U	EXT PRICE
3ea	78590129298	SQD MA4IMA16 277V 160KA SRG SUPRS			638.720	e	1916.16

### TERMS & CONDITIONS



OUR PRODUCTS AND SERVICES ARE SUBJECT TO, AND GOVERNED EXCLUSIVELY BY, OUR TERMS AND CONDITIONS OF SALE, WHICH ARE INCORPORATED HEREIN AND AVAILABLE AT [www.capitalelectricsupply.com/terms](http://www.capitalelectricsupply.com/terms). ADDITIONAL OR CONFLICTING TERMS ARE REJECTED, VOID, AND OF NO FORCE OR EFFECT. WIRE & PIPE PRICES ARE ONLY GOOD FOR THE CURRENT DAY.

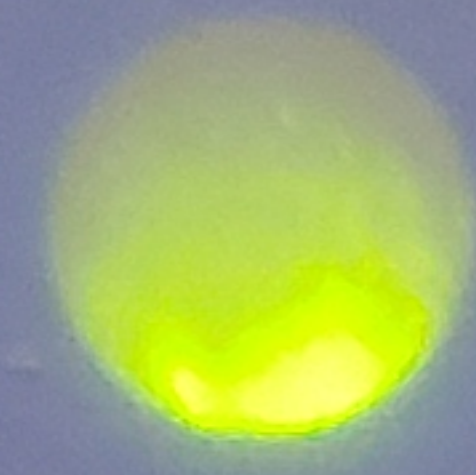
### TAXES NOT INCLUDED

<b>Subtotal</b>	<b>1916.16</b>
<b>S&amp;H CHGS</b>	<b>0.00</b>
<b>Amount Due</b>	<b>1916.16</b>



Made in USA / Hecho en E.U.A. / Fabriqué aux É.-U. [www.SquareD.com](http://www.SquareD.com)

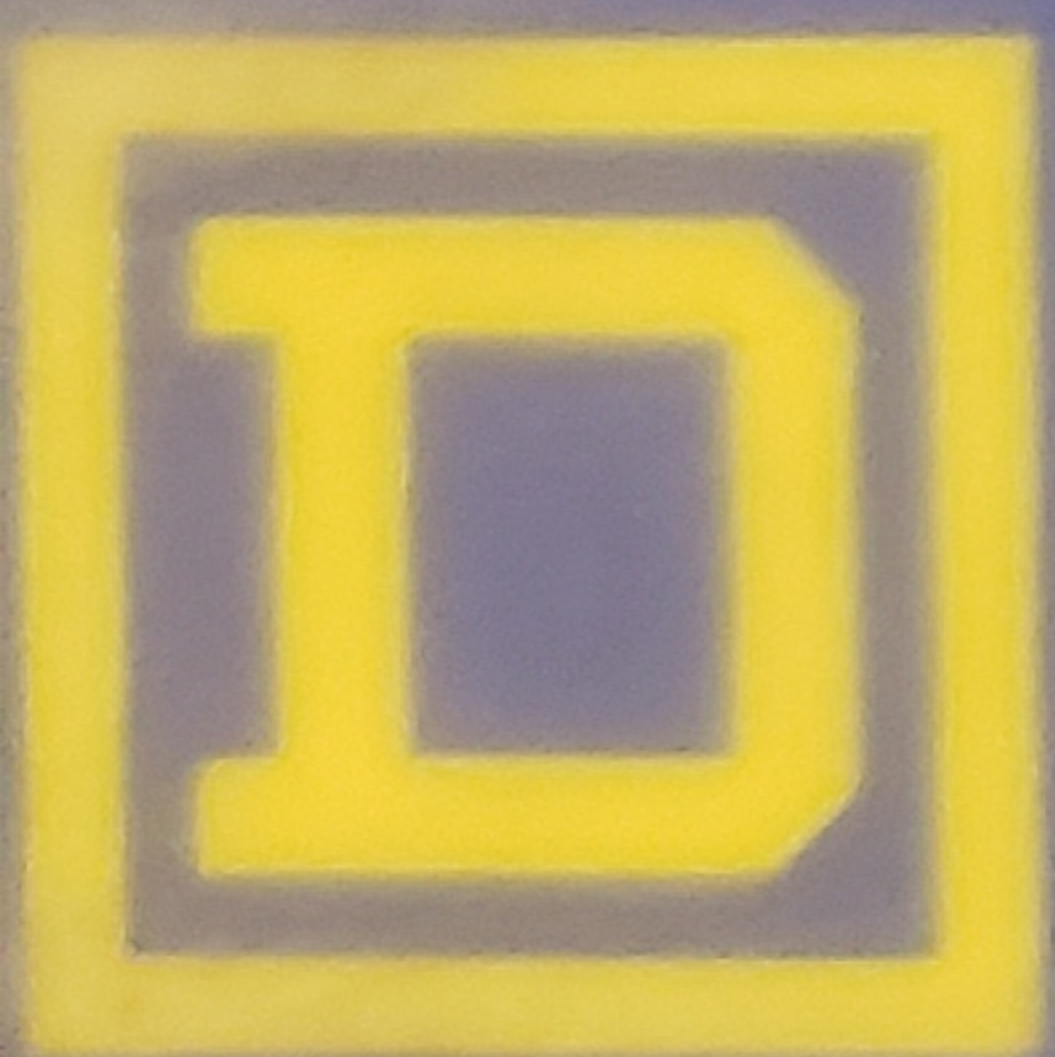
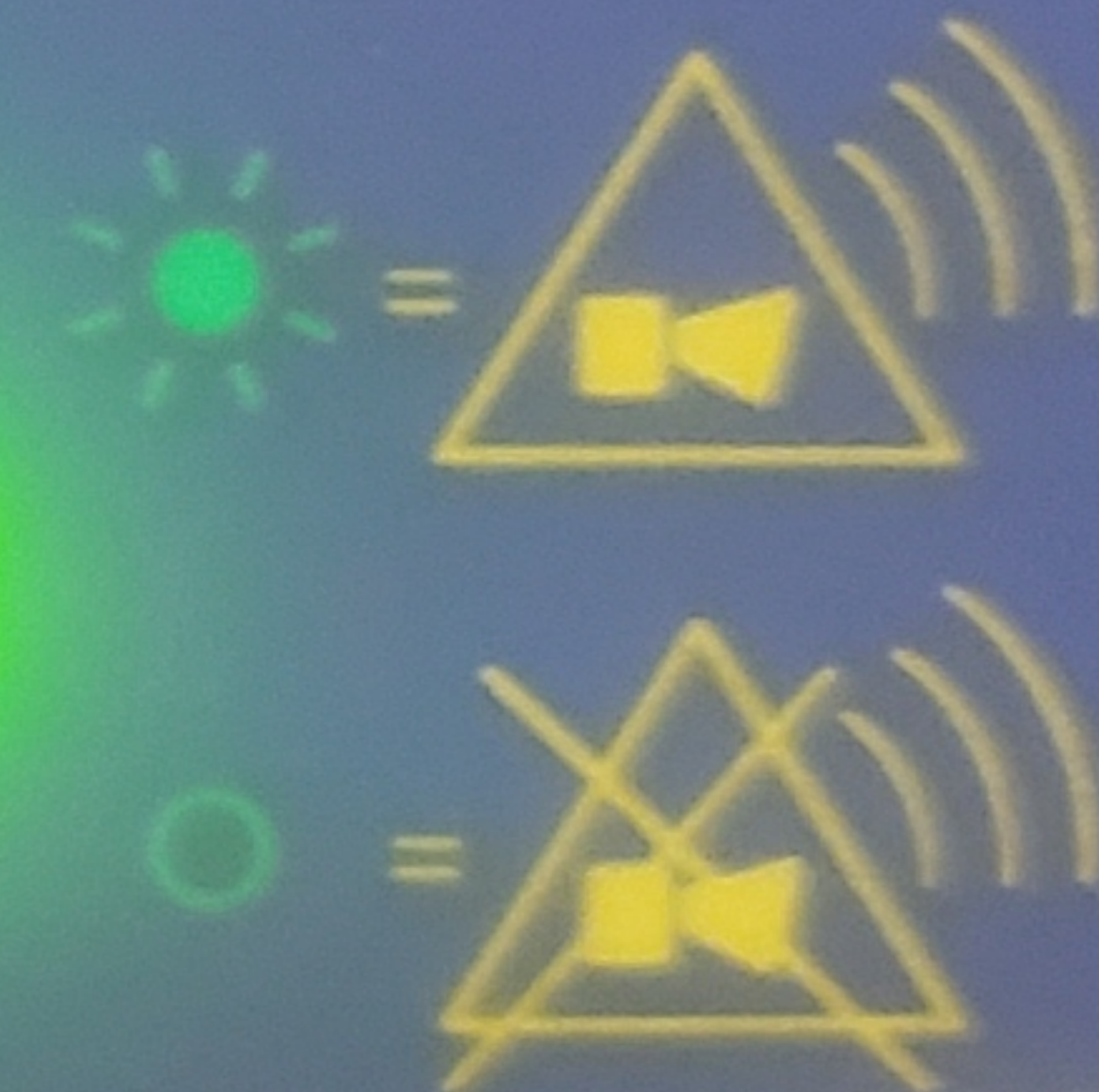
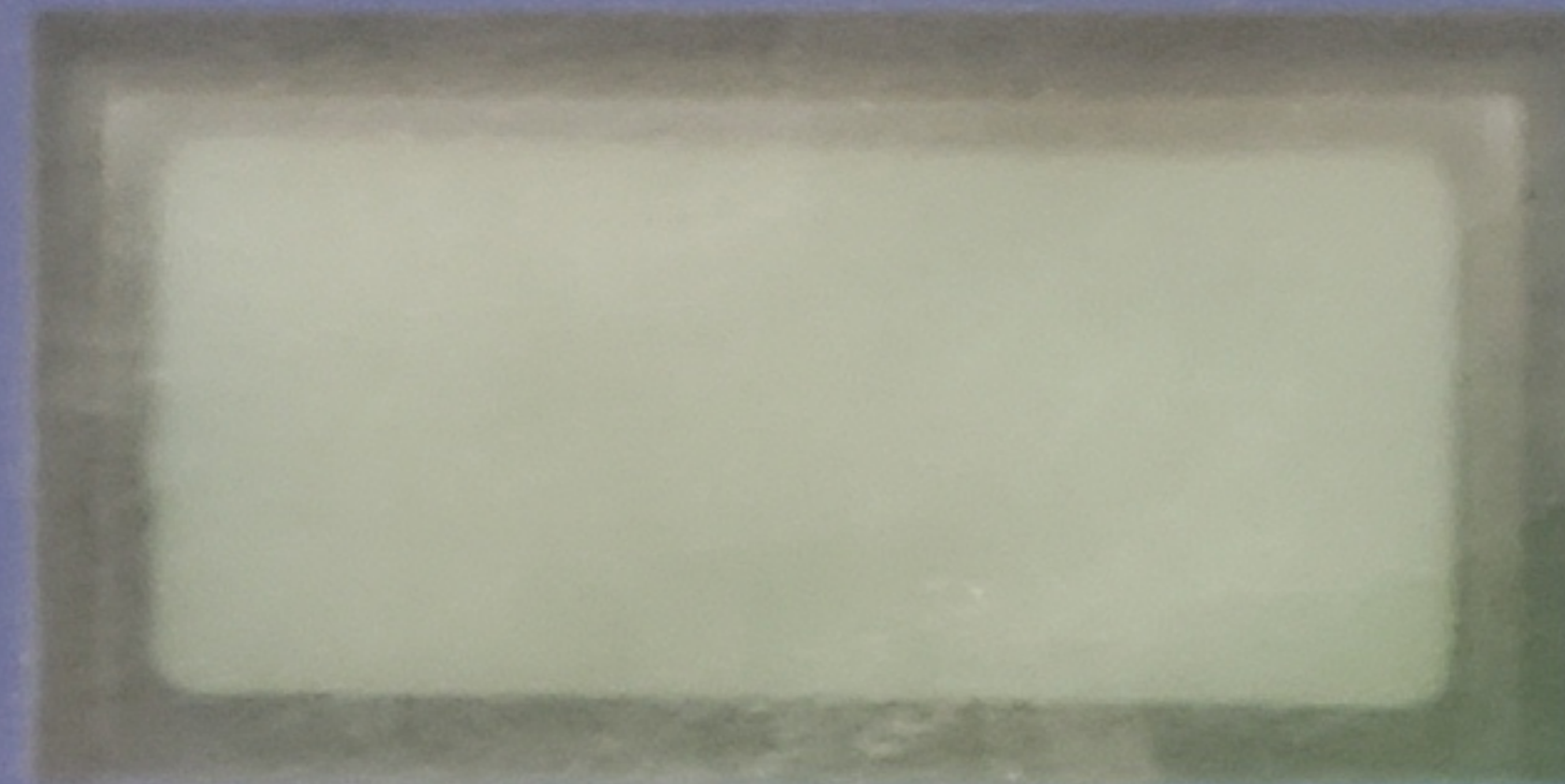
 = OK     = Replace Module / Sustituya el módulo / Remplacer le module



Push-to-Test / Botón de prueba / Bouton pousser pour vérifier



Counter /  
Contador /  
Compteur



***SURGELOGIC™***  
**Surge Protective Device**

Dispositivo de Protección contra  
Sobretensiones Transitorias /  
Dispositif de Protection contre  
les Surtensions

8222-0007B