

Date: 6/28/2023

Region: 4C
FAC ID: WV029

CSS No.: 94058
Maximo WO No.: 13374

Asset #: NA

Priority: Routine



Original Work Request:

Repair 4 exhaust fans - 1 in each bathroom

Description of Repairs Needed:

Labor and material to a.) replace the Motor belt drive with a new (B313 Motor Belt Drive 48FRM 1/4HP 1725RPM 115/2208-230V) b.) and replace the sheave with a new (1VL40X5/8 Bulk 3.75in O.D. 5/8IN HUB Bore single Groove Variable Pitch)

Labor	Labor Hrs	Labor Rate	Total
Technician	2	\$ 100.00	\$ 200.00
		\$ -	\$ -

Material List:	Quantity	Cost	Total
Motor Belt Drive S88-473	1	\$ 250.48	\$ 250.48
8 Bulk Sheave L46-541	1	\$ 35.73	\$ 35.73
		\$ -	\$ -
		\$ -	\$ -
		\$ -	\$ -
		\$ -	\$ -

Equipment List:	Quantity	Cost	Total
		\$ -	\$ -
		\$ -	\$ -
		\$ -	\$ -

PM WO History:

NA

Estimate Summary:

Labor	Material	Equipment
\$200.00	\$286.21	\$0.00

Sub Total	G&A 12%	Fee 6%	Total Estimate
\$486.21	--	--	\$486.21

Note: G&A and Fee are not applied on top of work performed by Tidewater.



Prepared by:

Tidewater, Inc.

6625 Selknick Drive, Suite A

Elkridge, MD 21075

Prepared for:

CMI Management, Inc.

5285 Shawnee Road Suite 510

Alexandria, VA 22312-2334

Date: 6/28/2023

CSS #: 94058

FAC ID: WV029

WO #: 13374

DESCRIPTION OF WORK

Labor and material to a.) replace the Motor belt drive with a new (B313 Motor Belt Drive 48FRM 1/4HP 1725RPM 115/2208-230V) is P b.) and replace the sheave with a new (1VL40X5/8 Bulk 3.75in O.D. 5/8IN HUB Bore single Groove Variable Pitch)

LABOR	QTY	UNIT/RATE	TOTAL
Technician	2	\$100.00	\$200.00
		\$0.00	\$0.00
MATERIAL	QTY	UNIT/RATE	TOTAL
Motor Belt Drive S88-473	1	\$250.48	\$250.48
8 Bulk Sheave L46-541	1	\$35.73	\$35.73
		\$0.00	\$0.00
		\$0.00	\$0.00
		\$0.00	\$0.00
		\$0.00	\$0.00
EQUIPMENT	QTY	UNIT/RATE	TOTAL
		\$0.00	\$0.00
		\$0.00	\$0.00
		\$0.00	\$0.00
SUB-TOTAL COSTS:	LABOR TOTAL		\$200.00
	MATERIAL TOTAL		\$286.21
	EQUIPMENT TOTAL		\$0.00
TOTAL COST:			\$486.21

Accepted By: _____

Date: _____



GE Motors

A-C MOTOR

921734

MOD5KC35HNA226

HP 1/4 HZ 60

115/230 PH 1

PM 1725 CODE M

5.20/2.60 SF 1.35

FA 5.80/2.80 FR 48Z

AMB 40 C INSUL CLASS B NEMA DESIGN

TIME RATING CONT

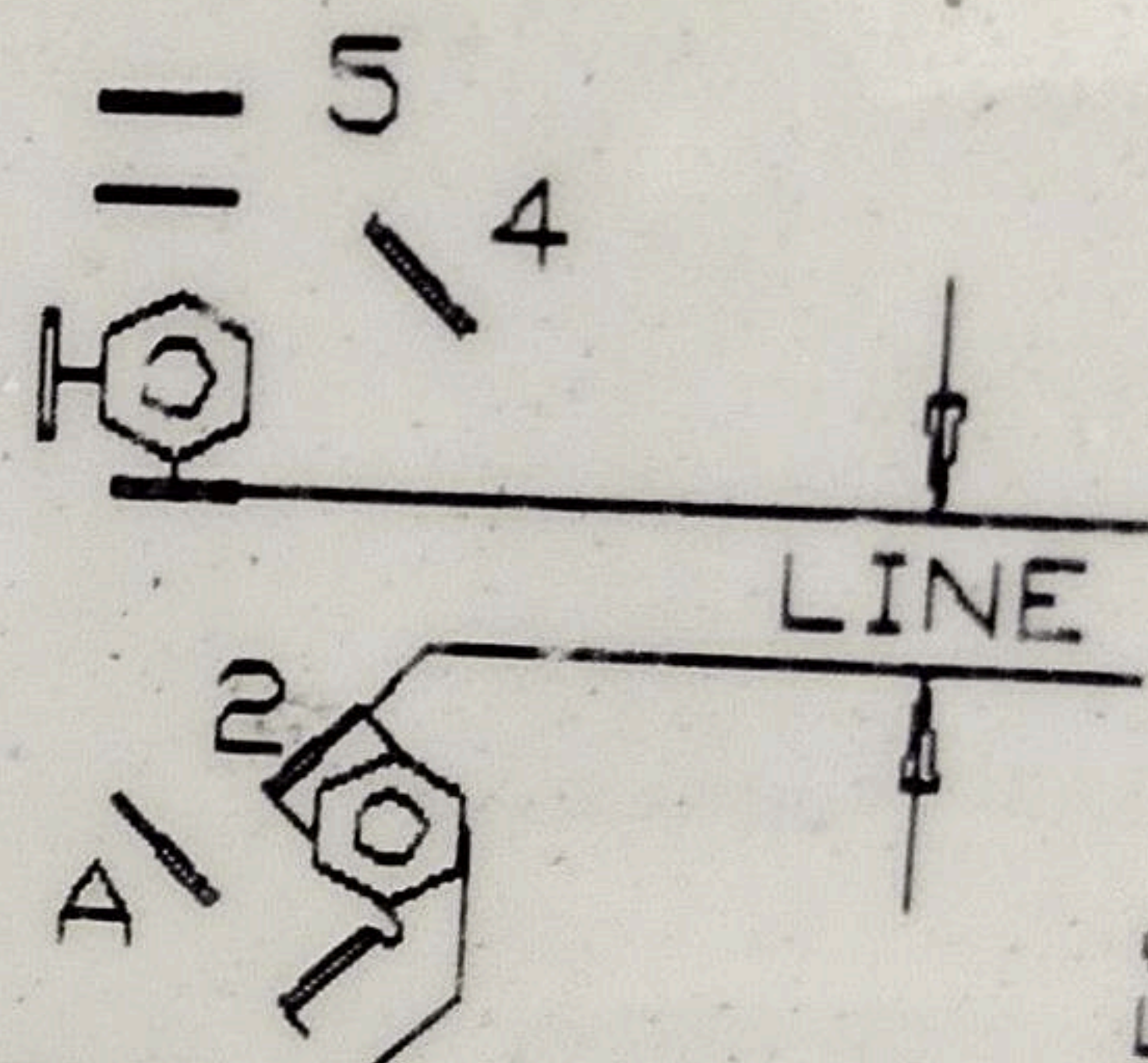
921734

- WARNING -

TERMINAL COVER MUST BE IN PLACE FOR SAFE OPERATION.
GROUND IN ACCORDANCE WITH LOCAL & NATIONAL ELECTRICAL CODES.
KEEP FINGERS & OBJECTS AWAY FROM OPENINGS & ROTATING PARTS.
DISCONNECT POWER SOURCES BEFORE TOUCHING INTERNAL PARTS.

VOLTAGE CONNECTIONS

LEAD	LOW VOLT	HIGH VOLT
BLUE	5	4
WHITE	2	5
RED	5	5
BLACK	A	A



CCW ROTATION AS SHOWN. TO REVERSE
ROTATION INTERCHANGE BLACK & RED

PACK: --

ACCESSORIES:

PERMANENTLY LUBRICATED BALL BEARINGS,
RELUBRICATION NOT REQUIRED

Made in
MEXICO

SER. NO. OJJ020042



