

Region: 5

Location: MD019

CSS #: TBD

Maximo Work Order No.: 11979

Asset #: NA

Date Issued: 09/17/20

Original Description: Possible bad motor bearings on Pump P-1B -need to investigate and get proposal

Repairs Needed:

SS Mechanical

RS Means Line Buildup and Labor Summary (Data Version 2017, Q4):

Quantity	Line Item Number	Description	Labor Hours	Labor Rate/Hr	Materials	Equipment	Total
--	NA	Parts & Shipping (See detail in Attached Quote)	--	--	\$1,699.46	--	\$1,699.46
--	NA	Diagnostic	--	--	\$250.00	--	\$250.00
--	NA	2 men 9 hours each	18	\$100.00	--	--	\$1,800.00
--	NA	TW Coordination	4	\$80.00	--	--	\$320.00

Estimate Summary:

Labor Hours	Labor Cost	Material Cost	PM Credit	Total Cost	CE Factor	Total Estimate
22	\$2,370.00	\$1,699.46	(\$250.00)	\$3,819.46	106%	\$4,048.63

**S&S MECHANICAL****S&S Mechanical**
4845 South Crain Highway
Upper Marlboro, MD 20772Tel. 1 - (301) 574-1555
Fax. 1 - (301) 574-1558
www.sandsmidatlantic.com**CUSTOMER QUOTATION NO. 377**Tidewater, Inc.
Tidewater, Inc
6625 Selnick Dr.
Suite A
Elkridge MD 21075**Quote Name:** 11979
Quote No: 377
Site: MD019 Greenspring Avenue
Site Contact:
Salesperson: Lindsay Ruby
Created Date: 09/16/2020
Valid For: 30 Day(s)**WO#: 11979****SOW:** Possible bad motor bearings on Pump P-1B -need to investigate and get proposal.

S&S was onsite and diagnosed the Armstrong pump needed a motor replacement.
S&S proposes to remove and replace the motor, gasket and insert.
S&S will then check the unit to ensure everything is working properly.

Service

Item	Quantity	Unit Price	Total
7.5HP, 1800 RPM, TEFC, 213TC Frame Motor	1.00	\$1,374.84	\$1,374.84
Gasket 426401-004	1.00	\$51.46	\$51.46
Insert 875000-803	1.00	\$73.16	\$73.16
Shipping	1.00	\$200.00	\$200.00
Diagnostic Total	1.00	\$250.00	\$250.00
Plumbing Labor Rate	9	\$100.00	\$900.00
Electrical Labor Rate	9	\$100.00	\$900.00
Sub-Total ex Tax			\$3,749.46
Tax			\$0.00
Total inc Tax			\$3,749.46
Labor			\$1,800.00
Materials			\$1,949.46
Sub-Total ex Tax			\$3,749.46
Tax			\$0.00
Total inc Tax			\$3,749.46



Desavage, Kenny Yesterday
to Shefrin, Seth, me ▾



For Armstrong pump model 4030 3x2x10, serial 605084

A 7.5HP, 1800 RPM, TEFC, 213TC frame motor is \$1145.70

Part # 84300525-083

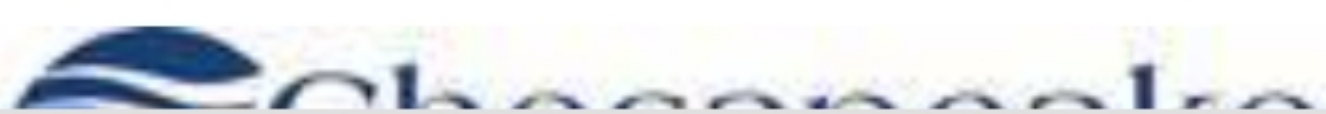
The factory is quoting 2-3 weeks for this

Price does not include shipping or tax

Thanks

Kenny DeSavage

Parts Manager





Desavage, Kenny Yesterday

to Seth, Shefrin, me ▾



The gasket 426401-004 is \$42.88

Just in case you need the seal, it is 975000-982 for \$89.11

As far as the coupler, do you need just the rubber insert or the complete coupler

Usually just the insert is replaced

Insert 875000-803 is \$60.97

Kenny DeSavage

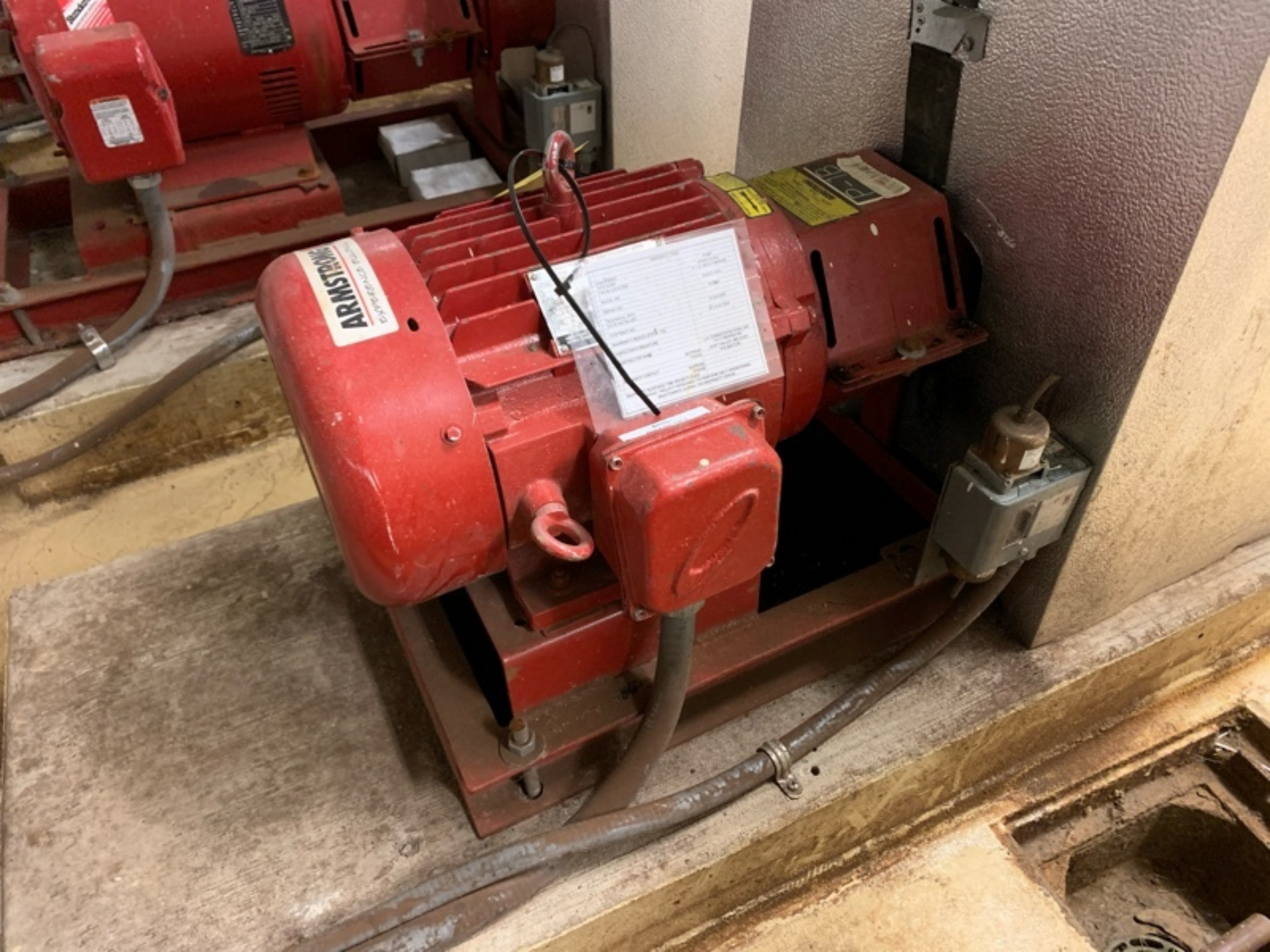
Parts Manager



7400 Coca-Cola Drive, Hanover, Maryland 21076

Office: 443.561.1600 | Direct: 443.561.1680 | Fax:





AMSTEC
ELECTRIC

Model: 1000
Capacity: 1000 GPM
Voltage: 230V
Frequency: 60 Hz
Power: 10 HP
Weight: 150 lbs
Dimensions: 18" x 18" x 18"
Material: Cast Iron
Finish: Red
Warranty: 1 Year
Manufacturer: AMSTEC
Distributed by: AMSTEC
Contact: 1-800-AMSTEC



ARMSTRONG

DANGER
ELECTRIC SHOCK

ARMSTRONG

P-1B