

Date: 3/3/2025

Region: 4C

FAC ID: WV010

CSS No.: 3030878

Maximo WO No.: 17934

Asset #: NA

Priority: Urgent



**Original Work Request:**

Repair pump 2 in mech room in ARC. Making very loud noises sounds like bearings have gone bad, probably needs replaced.

**Description of Repairs Needed:**

Labor and materials to isolate the pump unhook the electric and remove the pump then I need to install the new pump rewire and refill the system, test for proper operation and leaks then put back in service.

Labor	Labor Hrs	Labor Rate	Total
Tidewater Technician	8	\$ 100.00	\$ 800.00
		\$ -	\$ -

Material List:	Quantity	Cost	Total
1 HP B&G e612S Series e-60 Bronze In-Line Pump	1	\$ 3,799.77	\$ 3,799.77
		\$ -	\$ -
		\$ -	\$ -
		\$ -	\$ -
		\$ -	\$ -
		\$ -	\$ -

Equipment List:	Quantity	Cost	Total
		\$ -	\$ -
		\$ -	\$ -
		\$ -	\$ -

**PM WO History:**

**Estimate Summary:**

Labor	Material	Equipment
\$800.00	\$3,799.77	\$0.00

Sub Total	G&A 12%	Fee 6%	Total Estimate
\$4,599.77	--	--	\$4,599.77

Note: G&A and Fee are not applied on top of work performed by Tidewater.



Prepared by:

Tidewater, Inc.

6625 Selknick Drive, Suite A

Elkridge, MD 21075

Prepared for:

CMI Management, Inc.

5285 Shawnee Road Suite 510

Alexandria, VA 22312-2334

Date: 3/3/2025

CSS #: 3030878

FAC ID: WV010

WO #: 17934

DESCRIPTION OF WORK

Labor and materials to isolate the pump unhook the electric and remove the pump then I need to install the new pump rewire and refill the system, test for proper operation and leaks then put back in service.

LABOR	QTY	UNIT/RATE	TOTAL
Tidewater Technician	8	\$100.00	\$800.00
		\$0.00	\$0.00
MATERIAL	QTY	UNIT/RATE	TOTAL
1 HP B&G e612S Series e-60 Bronze In-Line Pump	1	\$3,799.77	\$3,799.77
		\$0.00	\$0.00
		\$0.00	\$0.00
		\$0.00	\$0.00
		\$0.00	\$0.00
		\$0.00	\$0.00
EQUIPMENT	QTY	UNIT/RATE	TOTAL
		\$0.00	\$0.00
		\$0.00	\$0.00
		\$0.00	\$0.00
SUB-TOTAL COSTS:	LABOR TOTAL		\$800.00
	MATERIAL TOTAL		\$3,799.77
	EQUIPMENT TOTAL		\$0.00
TOTAL COST:			\$4,599.77

Accepted By: \_\_\_\_\_

Date: \_\_\_\_\_





**BELL & GOSSETT**  
MORTON GROVE, ILL. U.S.A.  
ASSEMBLED IN U.S.A.

00

PUMP

SIZE

2 1/2" 1 1/2" 1 1/2"

65 GPM 25 FT

1 HP 1800 RPM

C321788-01 CH

CSA  
ENCL  
2







# Bell & Gossett

A-C MOTOR

COST NO 803585

CAT NO

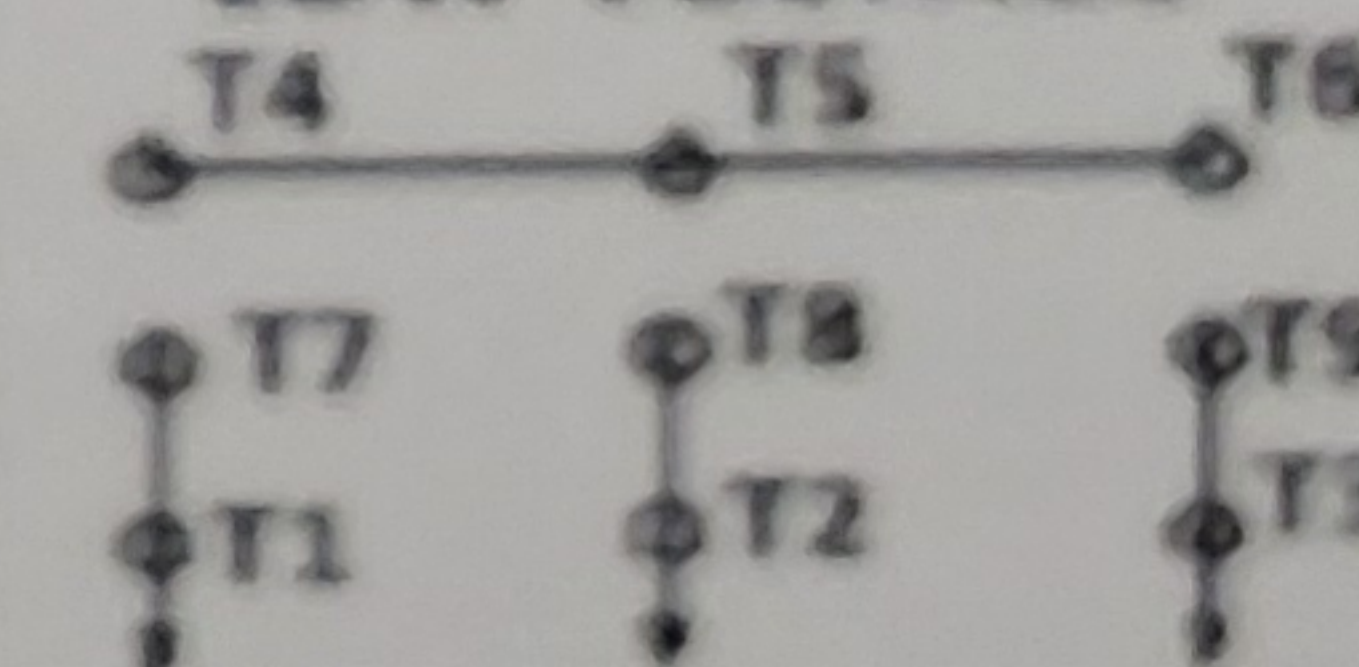
- WARNING -

TERMINAL COVER MUST BE IN PLACE FOR SAFE OPERATION.  
GROUND IN ACCORDANCE WITH LOCAL & NATIONAL ELECTRIC CODES.  
KEEP FINGERS & OBJECTS AWAY FROM OPENINGS & ROTATING PARTS.  
DISCONNECT POWER SOURCES BEFORE TOUCHING INTERNAL PARTS.

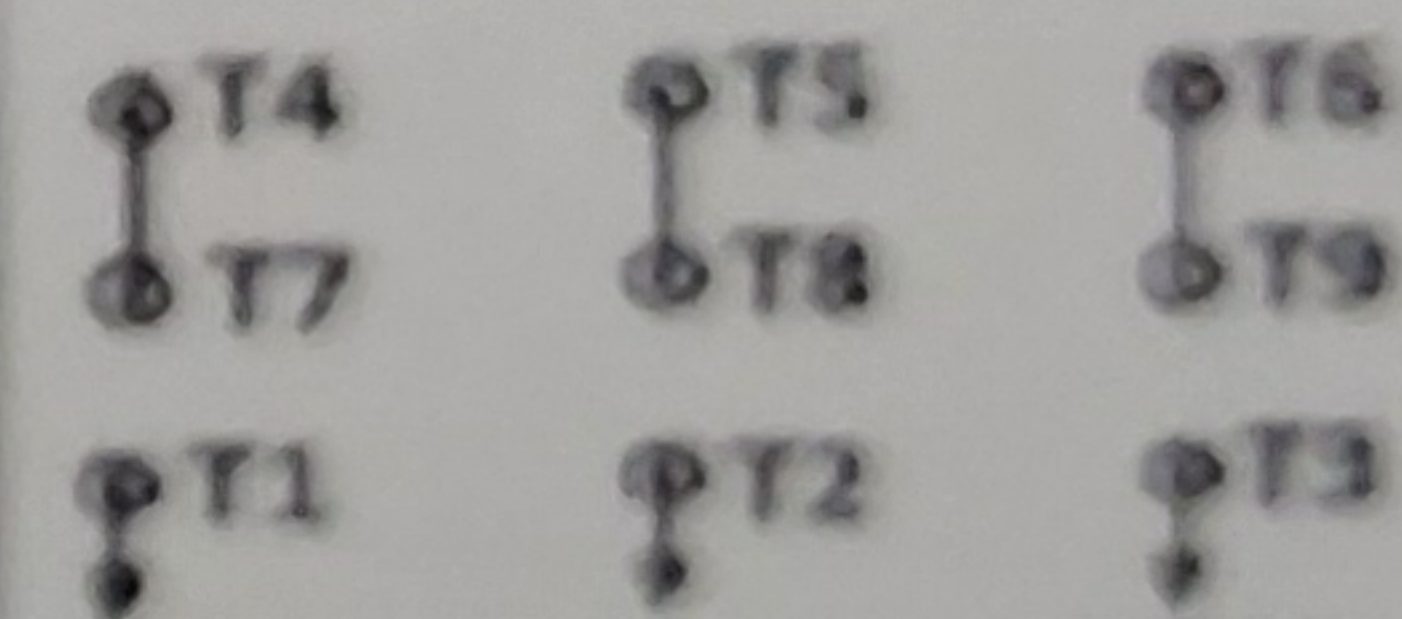
X0380334

MOD	V L 48T17D177B	K
HP1		HZ 60
V208-230/480		PH 3
RPM1728		CODE L
A 3.4-3.4/1.7		SF 1.25
SFA 3.8-3.8/1.9		FR 48Y
AMB 40 °C	TELL CLASS B3	NEW DESIGN B
TIME RATING	CONT	TYPETS ENC. DP
HZ 50	HP8/4	CODE
V180/380		A 3.2/1.8
RPM1425		SFA 3.4/1.7
SF115		E-49747

## LOW VOLTAGE



## HIGH VOLTAGE



TO REVERSE ROTATION, INTERCHANGE  
ANY TWO LINE LEADS.

103014

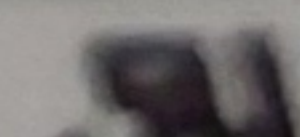
SER L15KT0032



PERMANENTLY LUBRICATED BEARINGS,  
NO FURTHER LUBRICATION REQUIRED.



LR2928



549747

ASSEMBLED  
IN MEXICO

