

## PREVENTATIVE MAINTENANCE PROGRAM CHECKLIST

### UNIT HEATER, INFRA-RED, RADIANT, GAS

SITE AND BLDG #: NY030 BLDG2

MECHANIC  
SIGNATURE: 

DATE: 7/12/23

LOCATION/RM #: BLDG2 WO# 13296 ASSET # 4508

START TIME: 8:15am

FINISH TIME: 8:30am

CHECK POINT	CHECKPOINT DESCRIPTION	TASK COMPLETE		NOTES/ ACTIONS (IF TASK COMPLETE IS CHECKED NO, PROVIDE EXPLANATION)
		YES	NO	
SPECIAL INSTRUCTIONS				
1	Follow lock out/tag out procedures at all times. De-energize or discharge all hydraulic, electrical, mechanical, or thermal energy prior to beginning work.	✓		
TO BE PERFORMED AT EACH				
1	For gsa/oil heaters: 1. Remove access panels if applicable. 2. Check the fire box liner or refractory for cracks and leaks. 3. Check all gas lines for leaks. Repair as needed.	✓		
2	Clean dirt from heater, vaccuming is preferred.	✓		
3	Check operation of gas valve.	✓		
4	Check for gas leaks.	✓		
5	Check operation of thermostat.	✓		
6	If applicable, replace primary air intake filter.	n/a		
7	As needed, clean spark electrode and reset gap, replace if necessary.	✓		
8	Inspect flue pipe and connections.	✓		
9	If applicable, inspect and clean outside air blower and blower intake.	✓		
10	Inspect unit for proper operation.	✓		
11	Inspect unit for overall condition and recommend for replacement or other needed repairs.	✓		

ROBERTS-GORDON, INC.      BUFFALO, N.Y.

INFRARED RADIANT TUBE HEATER

MODEL No. CTH2-100      SERIAL No. 9501-01-100-0001      INPUT BTU-HR. MAXIMUM 100,000

ANS Z83.6 2-1992      FOR USE WITH NAT GAS      MINIMUM 100,000

INFRARED HEATER      FOR INDOOR INSTALLATION ONLY

120 VOLT, 60 HZ, LESS THAN 12 AMPERES (ACTUAL AMPERAGE - SEE MANUAL)

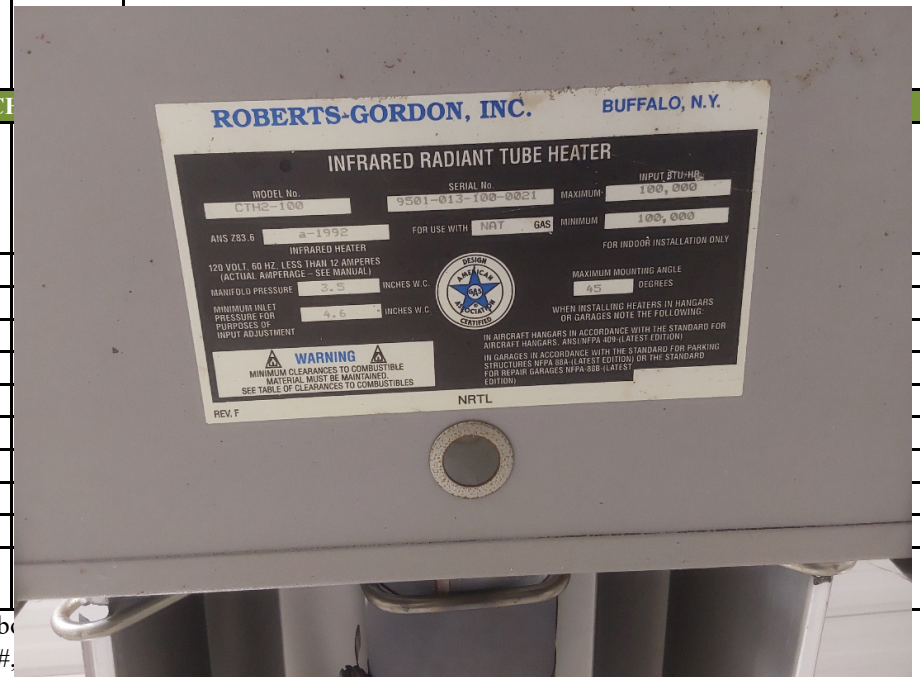
MANIFOLD PRESSURE 3.5      INCHES W.C.      MAXIMUM INCLINING ANGLE 45 DEGREES

MINIMUM INLET PRESSURE FOR PURPOSES OF INPUT ADJUSTMENT 4.5      INCHES W.C.

WHEN INSTALLING HEATERS IN HANGARS OR GARAGES NOTE THE FOLLOWING: IN AIRCRAFT HANGARS IN ACCORDANCE WITH THE STANDARD FOR AIRCRAFT HANGARS, ANSI/NFPA 809 (LATEST EDITION) IN GARAGES IN ACCORDANCE WITH THE STANDARD FOR STRUCTURES, NFPA 284 (LATEST EDITION) OR THE STANDARD FOR REPAIR GARAGES, NFPA 808 (LATEST EDITION)

WARNING MINIMUM CLEARANCES TO COMBUSTIBLE MATERIAL MUST BE MAINTAINED. SEE TABLE OF CLEARANCES TO COMBUSTIBLES

REV. F      NRTL



Note: The technician shall perform any repairs identified during PM up to \$250 (direct labor) exceeding \$250 open a corrective maintenance (CM) ticket and include the Asset #, WO #.

To be performed by: HVAC Technician

#### Additional Notes:

These are scheduled to be replaced Starting the sixteenth of august