

Additional Funding Request

Site: NY023	WO# 3409 CSS # 18263 Asset# NA
Description of Repairs	Need to replace sink and vanity
Diagnosis: Initial Work Order CSS# 18263	Replace pedestal sink with new sink and vanity in second floor men's bathroom. One of the legs the sink stands on keeps collapsing. The vanity is warn and should also be replaced. Room2010B in building #200
Explanation of Additional Costs for Repairs	Labor and material to replace sink and vanity
Additional Labor Cost to Perform Repairs	8hrs (2 men) x \$102.00= \$816.00
Additional Material Cost to Perform Repairs	\$622.46 + \$287.69 (Admin Fee) = \$910.15
Total Cost of Repair	\$1,726.15

ACAV SERVICES

March 29, 2019



ESTIMATE 0329191 CSS18263

Bill To		Ship To	
Customer	International Support Group M Wolfe	Recipient	99 RSC DPW R Linn
Customer ID#	[Customer ID]	Address	Ernie Pyle USARC BLDG 206 Ft Totten NY
Address	9050 Pines Blvd STE 150 Pembroke Pines FL 33024	Phone	718 631 6188
Phone	718 790 3562		
Payment Due	NET 30	Delivery Date	April 18, 2019
Salesperson	JW	Shipping Method	N/A
Payment Terms	CC	Shipping Terms	N/A

Qty.	Item#	Description	Unit Price	Line Total
1	1	BLDG 200 2nd Floor (EAST) Mens Latrine Drain entire Building down to facilitate repairs Remove and Repair floor mounted toilet and replace Leaking Flushometer Sloan Model 117 Remove existing wall mounted sink and replace with 18" vanity sink with new faucet, Brass Craft ball valves and P trap. Turn water back on and check for leaks Material Cost Labor Cost 8 Hours 102.00 per hour (2 men)		\$622.46 \$816.00

ACAV Services

11 Snug Cove Lane
Bayville NY 11709
Jacka377@verizon.net
516 941 6581

Qty.	Item#	Description	Unit Price	Line Total
		Admin Fee 20%		\$287.69
		TOTAL		\$1726.15
		NO TAX		
			TOTAL	\$1726.15

CERTIFICATION OF WORK

(To be completed by the Contractor and saved in the Contractor's CMMS)

FACID/Building: NY023 Bldg 200 Date of Visit: 3/24/19

Contractor Personnel on Site:

1. J WOHLE 2. D VESSIO

Work Performed:

Preventive Maintenance -(Annual, Quarterly, Monthly, equipment identification, etc.)
Service Orders -

Asset #	Qty	Asset Description
		CSS 18263
		2ND FLOOR MENS LATRINE
		(EAST SIDE)
		LEAKING TOILET
		BROKEN SINK

CERTIFICATION OF WORK

To be signed by the Contractor:

Print Name: JOHN WOHLE Date: 3/29/19

Signed: [Signature]

To be signed by Facility Manager:

I certify that the above named individuals representing the Contractor arrived on site and to the best of my knowledge, completed the stated work listed:

Print Name/Rank: Louis Corbo Date: _____

Signed: [Signature]

E-Mail: Louis-A-Corbo-CTR@mail.mil

Bill of Materials

Items in	Color/Finish	Qty	Unit Price	Total
Foremost HEO1816	Oak	1	\$193.42	\$193.42
Kohler K-8998-CP	Polished Chrome	1	\$116.39	\$116.39
Delta B2596LF	Chrome	1	\$85.31	\$85.31
Sloan 3010500	Chrome	1	\$199.34	\$199.34
				\$594.46

Total
\$594.46

BRASS CRAFT VALVES 28.00 14.00 each

+ 28.00

TOTAL 622.46



Foremost HEO1816

Heartland Bathroom Vanity 19" With Top

\$193.42



Kohler K-8998-CP

Adjustable P-Trap with tubing outlet for 1.25" OD Inlet and 1.25" OD Outlet

\$116.39



Delta B2596LF

Windemere Centerset Bathroom Faucet with Pop-Up Drain Assembly - Includes Lifetime

\$85.31



Sloan 3010500

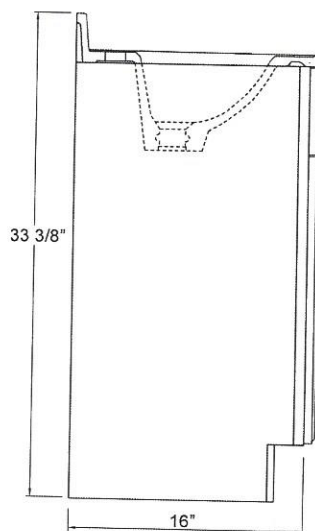
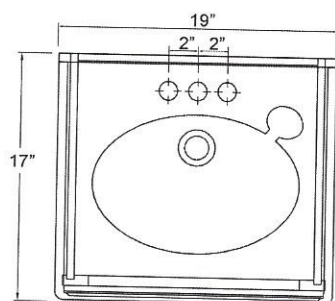
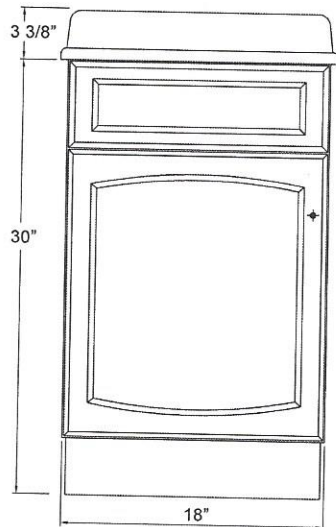
6.5 gpf Exposed Service Sink Flushometer, for use with 1-1/2" top spud Service Sinks.

\$199.34

FOREMOST®

HEARTLAND COLLECTION

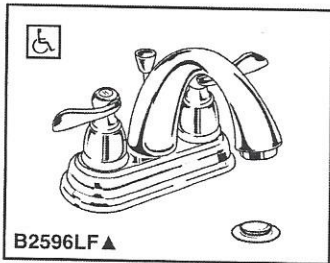
www.foremostgroups.com



18" Vanity with Top
HEW1816
HEO1816

Copyright © 2011 Foremost Groups, Inc. All Rights Reserved.
Revised 6.29.11

All dimensions are subject to change and variation without notice.



Submitted Model No.: _____
 Specific Features: _____



LAVATORY FAUCETS

- Windemere® Collection
- Two Handle Deck Mount

STANDARD SPECIFICATIONS:

- Maximum 1.5 gpm @ 60 PSI, 5.7 L/min @ 414 kPa
- Three hole mount
- 1/4 turn stops
- Control mechanism is a rotating cylinder type with stainless steel plate and 90° rotation, with replaceable non-metallic seats
- Models include metal pop-up type fitting with plated metal flange and stopper cap

WARRANTY

- Lifetime limited warranty on parts (other than electronic parts and batteries) and finishes; or, for commercial users, for 5 years from date of purchase.
- 5 year limited warranty on electronic parts (other than batteries); or, for commercial users, for 1 year from the date of purchase. No warranty is provided on batteries.



COMPLIES WITH

- ASME A112.18.1 / CSA B125.1
- ASME A112.18.2 / CSA B125.2
- Indicates compliance to ICC / ANSI A117.1

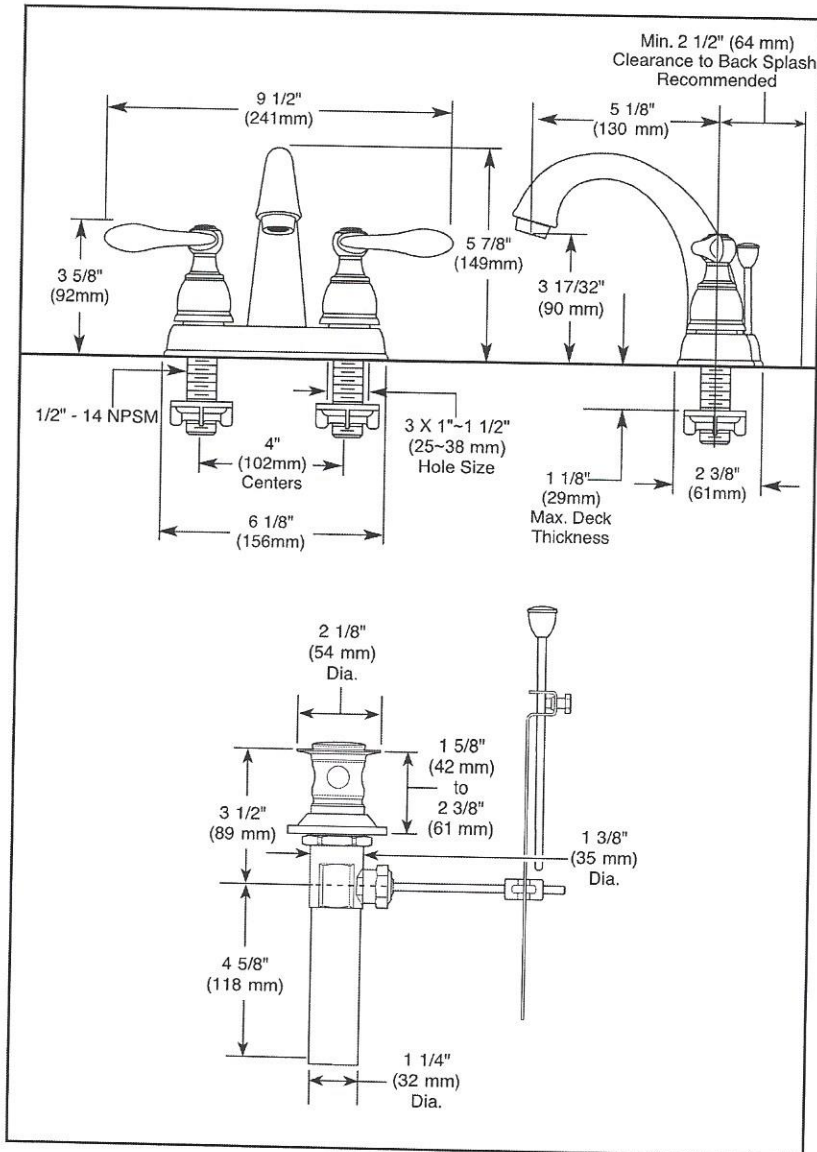
■ EPA WaterSense®
 Verified compliant with 0.25% weighted average Pb content regulations.



55 E. 111th Street, Indianapolis, Indiana 46280
 350 South Edgeware Road, St. Thomas, ON N5P 4L1
 © 2015 Masco Corporation of Indiana

Delta reserves the right (1) to make changes in specifications and materials, and (2) to change or discontinue models, both without notice or obligation. Dimensions are for reference only. See full-line price book or www.deltafaucet.com for finish options and product availability.

DSP-L-B2596LF Rev. C



▲ Designate proper finish suffix



Royal® Model Flushometer

117

Description

Exposed Service Sink Flushometer, for use with top spud Service Sinks.

Flush Cycle

□ Model 117 (6.5 gpf/24.6 Lpf)

Specifications

Quiet, Exposed, Diaphragm Type, Chrome Plated Service Sink Flushometer with the following features:

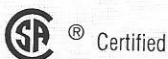
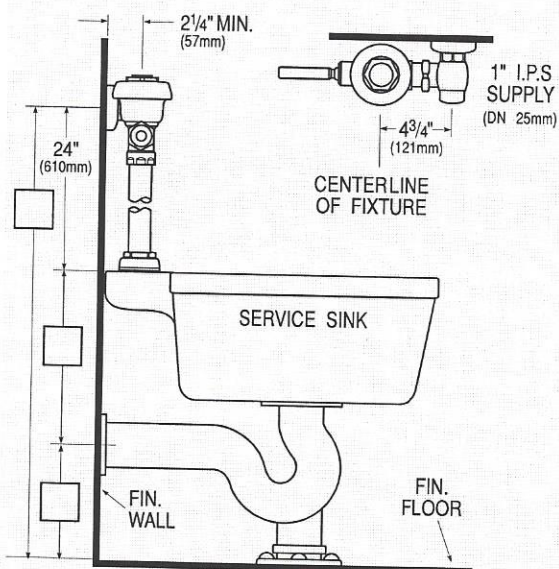
- PERMEX™ Synthetic Rubber Diaphragm with Dual Filtered Fixed Bypass
- ADA Compliant Metal Oscillating Non-Hold-Open Handle with Triple Seal Handle Packing
- 1" I.P.S. Screwdriver Bak-Chek™ Angle Stop
- Free Spinning Vandal Resistant Stop Cap
- Adjustable Tailpiece
- High Back Pressure Vacuum Breaker Flush Connection with One-piece Bottom Hex Coupling Nut
- Spud Coupling and Flange for 1½" Top Spud
- Sweat Solder Adapter with Cover Tube and Cast Set Screw Wall Flange
- High Copper, Low Zinc Brass Castings for Dezincification Resistance
- Non-Hold-Open Handle, Fixed Metering Bypass and No External Volume Adjustment to Ensure Water Conservation
- Flush Accuracy Controlled by CID™ Technology
- Diaphragm, Handle Packing, Stop Seat and Vacuum Breaker to be molded from PERMEX™ Rubber Compound for Chloramine Resistance

Valve Body, Cover, Tailpiece and Control Stop shall be in conformance with ASTM Alloy Classification for Semi-Red Brass. Valve shall be in compliance to the applicable sections of ASSE 1037, ANSI/ASME 112.19.6, and Military Specification V-29193.

Variations

- H Handle on Front of Valve
- HL-3 3" Metal Oscillating Push Button on front of valve
- O Offset Vacuum Breaker, Specify: 1" - 1½" - 2"
- YJ Split Ring Pipe Support
- YK Solid Ring Pipe Support

See Accessories Section of the Sloan catalog for details on these and other Flushometer variations.

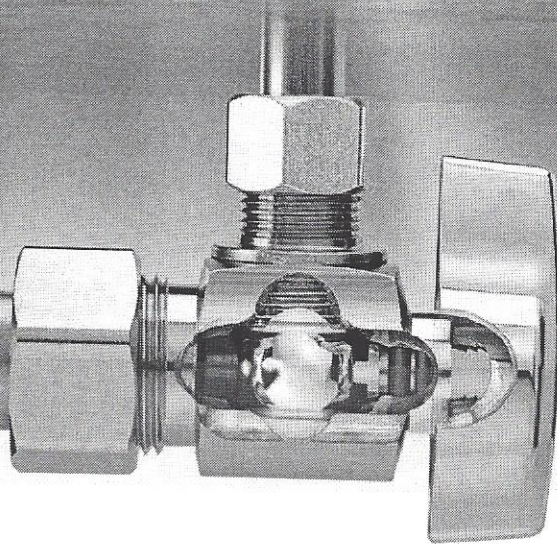


This space for Architect/Engineer approval

The information contained in this document is subject to change without notice.

SLOAN®

Made in the U.S.A.
SLOAN VALVE COMPANY • 10500 SEYMOUR AVE. • FRANKLIN PARK, IL. 60131
Ph: 1-800-9-VALVE-9 or 1-847-671-4300 • Fax: 1-800-447-8329 or 1-847-671-4380
<http://www.sloanvalve.com>



Just like you, the BrassCraft® KT™ Series 1/4 Turn Ball Stops outperform – stopping at nothing to get the job done right. Designed, Machined and Assembled in the U.S.A., these stops provide uncompromising quality, dependability and innovation. With premium features, a sleek appearance and ease-of-use, the KT Series 1/4 Turn Ball Stop is nothing short of brilliant. That is why plumbers have trusted BrassCraft products for more than 65 years.

Every KT Series 1/4 Turn Ball Stop offers:

High Performance Seats Uniquely designed PTFE seats provide corrosion resistance and a watertight seal while assuring ease of use, even after long periods of time.

Precision — Machined Brass Ball Specially engineered brass ball mated with PTFE seats resists corrosion, provides long life and ensures ease of operation.

Chrome-Plated Brass Body Machined one-piece brass body for strength and durability with chrome finish for corrosion resistance and fine appearance.

Double O-Rings Ensures safe, reliable performance.

Plated Stem Provides corrosion resistance and prevents o-ring damage after long periods of non-use.

Chrome Plated, Metal Handle Designed for durability, corrosion resistance, and a sleek appearance.

100% Leak Tested Each stop is leak tested to ensure reliability.

Compliant KT Stops Meets “no-lead” requirements.

The KT Series 1/4 Turn Ball Stop by BrassCraft Manufacturing – with uncompromising quality and superior performance, it stops short of nothing.

Committed to Quality, Driven by Innovation



BrassCraft®



Scan for
more
information.

BrassCraft Manufacturing Co.
39600 Orchard Hill Place
Novi, Michigan 48375-5331
TOLL FREE (877) 272-7755
FAX: (248) 305-6011

www.brasscraft.com

35 Currah Road
St. Thomas, Ontario N5P 3R2
(519) 633-0340
FAX: (519) 633-0777