

Over and Above Estimate

Region: 2

Location: NY023

CSS # 91038

Maximo Work Order No. 20216

Asset#:

Date Issued: 12/5/2022

Original Description: Fix boiler alarm 128

Description of Repairs: Boiler 1 is in alarm and not working. A complete diagnostic has been conducted on the entire boiler system. The poor pilot light ultraviolet scanner needs to be cleaned and adjusted, the cad cell scanner and electrodes need to be cleaned, and replace Honeywell scanner C7027A.

Non-Pre-Priced Estimate:

Quantity	Line Item #	Description	Labor Hours	Unit	Labor	Materials	Equipment	Total
1		Materials (See attached estimate for line items)				\$980.00		

Note: RS Means (Pre-Priced) is not used in compiling this estimate.

Note: Subcontractor quote attached.

Estimate Summary:

Labor Hours	Labor Cost	Equipment	Material	Total Cost	CE Factor	Total Estimate
X2 men at 6 hours each at 250.00 per hour= 2000.00	\$3000.00		\$395.00	\$3395.00	.90	\$3055.00

Please see the attached estimate.

ACAV SERVICES

December 11, 2022



ESTIMATE 121122 CSS91038 WO20216

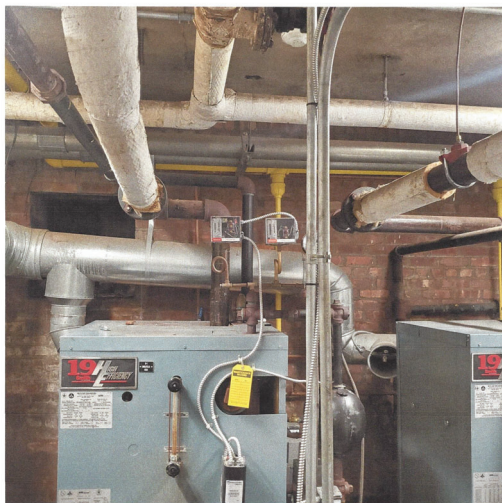
Bill To		Ship To	
Customer	International Support Group M DUBOIS,	Recipient	99 RSC RD DPW L CORBO
Customer ID#	NY023 (BLDG 128)	Address	Ernie Pyle USARC BLDG 206 Ft Totten NY
Address	9050 Pines Blvd STE 150 Pembroke Pines FL 33024	Phone	718 631 6188
Phone	954 900 1095		
Payment Due	NET 30	Delivery Date	N/A
Salesperson	JW	Shipping Method	N/A
Payment Terms	N/A	Shipping Terms	N/A

Qty.	Item#	Description	Unit Price	Line Total
		NY23 (BLDG 128) BOILER #1 IN ALARM AND NOT WORKING A COMPLETE DIAGNOSTIC HAS BEEN CONDUCTED OF THE ENTIRE BOILER SYSTEM OPERATION POOR PILOT LIGHT ULTRA VIOLET SCANNER NEEDS TO BE CLEANED AND ADJUSTED CAD CELL SCANNER AND ELECTRODES NEEDS TO BE CLEANED REPLACE THE HONEYWELL SCANNER #C7027A		

ACAV Services

11 Snug Cove Lane
Bayville NY 11709
Jacka377@verizon.net
516 941 6581

Qty.	Item#	Description	Unit Price	Line Total
		<u>MATERIAL</u>		
		1EA HONEYWELL SCANNER #C7027A		\$395.00
		<u>LABOR</u>		
		12 HRS @ \$250.00		\$3000.00
		(2 MEN 6 HRS EA)		
		TOTAL		\$3395.00
		BLDG 128 IS OVER 120 YEARS OLD PRIOR TO JUNE OF THIS YEAR THE BUILDING WAS USED AS STORAGE SPACE FOR RESERVE UNITS STAINED AT FT TOTTEN. THE SPACE IS NOW IS USED BY FULL TIME PERSONNEL ON A FULL TIME BASIS WHILE BLDG 200 IS UPGRADED WITH AN FFR. THE HEATING SYSTEM IS A STEAM SYSTEM AND REQUIRED NUMEROUS REPAIRS THOUGH OUT THE YEARS. NONE OF THE PROBLEMS FOUND ARE DUE TO A LACK OF PM.		
			TOTAL	\$3395.00





[illegible]

Number	Serial #	Asset Description	Asset Location
--------	----------	-------------------	----------------

DATE / NAME	CHECKPOINT DESCRIPTION	YEAR / COMPLETION DATE	NOTES / ACTIONS
			IF YOUR CHECKPOINT CONTAINS MORE THAN ONE CHECKPOINT, PLEASE ADD ADDITIONAL
			SPECIAL SNAPSHOT ACTIONS
1	In addition to the procedures outlined in the standard, the equipment must be inspected and maintained according to manufacturer's (and/or instructor's) instructions to ensure safety adherence to:		
2	Verify that the annual inspection for the buckles has been satisfactorily completed.		
3	Follow basic working rules upon inspection. Use warnings or shutdown all hydraulic, electrical, mechanical, or thermal energy prior to beginning work. Wear appropriate equipment, goggles, and gloves while in contact with hazardous materials.		

CHECK ITEM	COMPLETION DESCRIPTION	YES		NOTED BY (NAME)	DATE
		✓	✗		
1	Perform repairs on materials and existing part of the bridge, the required repair materials and methods are approved by the Engineer.	<input checked="" type="checkbox"/>	<input type="checkbox"/>		
2	All dead valves or cracks located between the two valves shall be repaired.	<input checked="" type="checkbox"/>	<input type="checkbox"/>		
3	Inquiries will not arise from any material that requires special preparation and post-operative protection from the heat source.	<input checked="" type="checkbox"/>	<input type="checkbox"/>		
4	A surface that has been properly prepared for an external protection, the required thickness is within the tolerance.	<input checked="" type="checkbox"/>	<input type="checkbox"/>		
5	The material to be installed on the bridge is required to contain no voids, cracks, or inclusions, and the material is required to be installed in a manner that is consistent with the design.	<input checked="" type="checkbox"/>	<input type="checkbox"/>		
6	The bridge deck is required to be installed in a manner that is consistent with the design.	<input checked="" type="checkbox"/>	<input type="checkbox"/>		
7	Access for the installation and support of the bridge deck.	<input checked="" type="checkbox"/>	<input type="checkbox"/>		
REMARKS:					
8	Check for the condition of the materials and the quality of the work.	<input checked="" type="checkbox"/>	<input type="checkbox"/>		
9	Check for the condition of the materials and the quality of the work.	<input checked="" type="checkbox"/>	<input type="checkbox"/>		
10	Check for the condition of the gas control and ventilation, manual gas shutoff gas tap regulator, safety stand-off distance, and the required safety equipment used.	<input checked="" type="checkbox"/>	<input type="checkbox"/>		
11	Check for the condition of the gas control and ventilation, manual gas shutoff gas tap regulator, safety stand-off distance, and the required safety equipment used.	<input checked="" type="checkbox"/>	<input type="checkbox"/>		
12	Check for the condition of the gas control and ventilation, manual gas shutoff gas tap regulator, safety stand-off distance, and the required safety equipment used.	<input checked="" type="checkbox"/>	<input type="checkbox"/>		
13	Check for the condition of the gas control and ventilation, manual gas shutoff gas tap regulator, safety stand-off distance, and the required safety equipment used.	<input checked="" type="checkbox"/>	<input type="checkbox"/>		
14	Check for the condition of the gas control and ventilation, manual gas shutoff gas tap regulator, safety stand-off distance, and the required safety equipment used.	<input checked="" type="checkbox"/>	<input type="checkbox"/>		
15	Check for the condition of the gas control and ventilation, manual gas shutoff gas tap regulator, safety stand-off distance, and the required safety equipment used.	<input checked="" type="checkbox"/>	<input type="checkbox"/>		
16	Check for the condition of the gas control and ventilation, manual gas shutoff gas tap regulator, safety stand-off distance, and the required safety equipment used.	<input checked="" type="checkbox"/>	<input type="checkbox"/>		
17	Check for the condition of the gas control and ventilation, manual gas shutoff gas tap regulator, safety stand-off distance, and the required safety equipment used.	<input checked="" type="checkbox"/>	<input type="checkbox"/>		
18	Check for the condition of the gas control and ventilation, manual gas shutoff gas tap regulator, safety stand-off distance, and the required safety equipment used.	<input checked="" type="checkbox"/>	<input type="checkbox"/>		
19	Check for the condition of the gas control and ventilation, manual gas shutoff gas tap regulator, safety stand-off distance, and the required safety equipment used.	<input checked="" type="checkbox"/>	<input type="checkbox"/>		
20	Check for the condition of the gas control and ventilation, manual gas shutoff gas tap regulator, safety stand-off distance, and the required safety equipment used.	<input checked="" type="checkbox"/>	<input type="checkbox"/>		
21	Check for the condition of the gas control and ventilation, manual gas shutoff gas tap regulator, safety stand-off distance, and the required safety equipment used.	<input checked="" type="checkbox"/>	<input type="checkbox"/>		
22	Check for the condition of the gas control and ventilation, manual gas shutoff gas tap regulator, safety stand-off distance, and the required safety equipment used.	<input checked="" type="checkbox"/>	<input type="checkbox"/>		
23	Check for the condition of the gas control and ventilation, manual gas shutoff gas tap regulator, safety stand-off distance, and the required safety equipment used.	<input checked="" type="checkbox"/>	<input type="checkbox"/>		
24	Check for the condition of the gas control and ventilation, manual gas shutoff gas tap regulator, safety stand-off distance, and the required safety equipment used.	<input checked="" type="checkbox"/>	<input type="checkbox"/>		
25	Check for the condition of the gas control and ventilation, manual gas shutoff gas tap regulator, safety stand-off distance, and the required safety equipment used.	<input checked="" type="checkbox"/>	<input type="checkbox"/>		
26	Check for the condition of the gas control and ventilation, manual gas shutoff gas tap regulator, safety stand-off distance, and the required safety equipment used.	<input checked="" type="checkbox"/>	<input type="checkbox"/>		
27	Check for the condition of the gas control and ventilation, manual gas shutoff gas tap regulator, safety stand-off distance, and the required safety equipment used.	<input checked="" type="checkbox"/>	<input type="checkbox"/>		
28	Check for the condition of the gas control and ventilation, manual gas shutoff gas tap regulator, safety stand-off distance, and the required safety equipment used.	<input checked="" type="checkbox"/>	<input type="checkbox"/>		
29	Check for the condition of the gas control and ventilation, manual gas shutoff gas tap regulator, safety stand-off distance, and the required safety equipment used.	<input checked="" type="checkbox"/>	<input type="checkbox"/>		
30	Check for the condition of the gas control and ventilation, manual gas shutoff gas tap regulator, safety stand-off distance, and the required safety equipment used.	<input checked="" type="checkbox"/>	<input type="checkbox"/>		
31	Check for the condition of the gas control and ventilation, manual gas shutoff gas tap regulator, safety stand-off distance, and the required safety equipment used.	<input checked="" type="checkbox"/>	<input type="checkbox"/>		
32	Check for the condition of the gas control and ventilation, manual gas shutoff gas tap regulator, safety stand-off distance, and the required safety equipment used.	<input checked="" type="checkbox"/>	<input type="checkbox"/>		
33	Check for the condition of the gas control and ventilation, manual gas shutoff gas tap regulator, safety stand-off distance, and the required safety equipment used.	<input checked="" type="checkbox"/>	<input type="checkbox"/>		
34	Check for the condition of the gas control and ventilation, manual gas shutoff gas tap regulator, safety stand-off distance, and the required safety equipment used.	<input checked="" type="checkbox"/>	<input type="checkbox"/>		
35	Check for the condition of the gas control and ventilation, manual gas shutoff gas tap regulator, safety stand-off distance, and the required safety equipment used.	<input checked="" type="checkbox"/>	<input type="checkbox"/>		
36	Check for the condition of the gas control and ventilation, manual gas shutoff gas tap regulator, safety stand-off distance, and the required safety equipment used.	<input checked="" type="checkbox"/>	<input type="checkbox"/>		
37	Check for the condition of the gas control and ventilation, manual gas shutoff gas tap regulator, safety stand-off distance, and the required safety equipment used.	<input checked="" type="checkbox"/>	<input type="checkbox"/>		
38	Check for the condition of the gas control and ventilation, manual gas shutoff gas tap regulator, safety stand-off distance, and the required safety equipment used.	<input checked="" type="checkbox"/>	<input type="checkbox"/>		
39	Check for the condition of the gas control and ventilation, manual gas shutoff gas tap regulator, safety stand-off distance, and the required safety equipment used.	<input checked="" type="checkbox"/>	<input type="checkbox"/>		
40	Check for the condition of the gas control and ventilation, manual gas shutoff gas tap regulator, safety stand-off distance, and the required safety equipment used.	<input checked="" type="checkbox"/>	<input type="checkbox"/>		
41	Check for the condition of the gas control and ventilation, manual gas shutoff gas tap regulator, safety stand-off distance, and the required safety equipment used.	<input checked="" type="checkbox"/>	<input type="checkbox"/>		
42	Check for the condition of the gas control and ventilation, manual gas shutoff gas tap regulator, safety stand-off distance, and the required safety equipment used.	<input checked="" type="checkbox"/>	<input type="checkbox"/>		
43	Check for the condition of the gas control and ventilation, manual gas shutoff gas tap regulator, safety stand-off distance, and the required safety equipment used.	<input checked="" type="checkbox"/>	<input type="checkbox"/>		
44	Check for the condition of the gas control and ventilation, manual gas shutoff gas tap regulator, safety stand-off distance, and the required safety equipment used.	<input checked="" type="checkbox"/>	<input type="checkbox"/>		
45	Check for the condition of the gas control and ventilation, manual gas shutoff gas tap regulator, safety stand-off distance, and the required safety equipment used.	<input checked="" type="checkbox"/>	<input type="checkbox"/>		
46	Check for the condition of the gas control and ventilation, manual gas shutoff gas tap regulator, safety stand-off distance, and the required safety equipment used.	<input checked="" type="checkbox"/>	<input type="checkbox"/>		
47	Check for the condition of the gas control and ventilation, manual gas shutoff gas tap regulator, safety stand-off distance, and the required safety equipment used.	<input checked="" type="checkbox"/>	<input type="checkbox"/>		
48	Check for the condition of the gas control and ventilation, manual gas shutoff gas tap regulator, safety stand-off distance, and the required safety equipment used.	<input checked="" type="checkbox"/>	<input type="checkbox"/>		
49	Check for the condition of the gas control and ventilation, manual gas shutoff gas tap regulator, safety stand-off distance, and the required safety equipment used.	<input checked="" type="checkbox"/>	<input type="checkbox"/>		
50	Check for the condition of the gas control and ventilation, manual gas shutoff gas tap regulator, safety stand-off distance, and the required safety equipment used.	<input checked="" type="checkbox"/>	<input type="checkbox"/>		

Note: The technician shall perform any repairs identified during PM up to \$250 (direct labor and direct material cost) per PM occurrence. For any deficiencies found exceeding \$250 open a corrective maintenance (CM) ticket and include the Asset #, WO #, photos, and a detailed description of the deficiency. To be performed by: HVAC Technicians. Additional Notes:

Note: The technician shall perform any repairs identified during PM up to \$250 (direct labor and direct material cost) per PM occurrence. For any deficiencies found exceeding \$250 open a corrective maintenance (CM) ticket and include the Asset #, WO #, photos, and a detailed description of the deficiency. To be performed by: HVAC Technicians. Additional Notes:

