



Date: 10/18/2023
Facility ID: PA209
Work Order #: 13993
Boiler ID: 6581

Seasonal Start Up - Boiler PM Inspection Worksheet

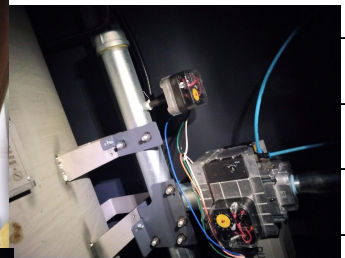
1. Verify full boiler
2. Test the safety/relief valve after startup (full pressure test)
3. Clean or replace the fuel filters
4. Clean the fuel nozzles
5. Inspect, clean and functionally test the flame scanner and flame safeguard relay
6. Clean and adjust the ignition electrode
7. Replace the vacuum tube in flame safeguard control, if applicable
8. Perform pilot turn down test
9. Verify proper water flow through the boiler
10. Perform visual combustion test and adjust the burner for maximum efficiency
11. Test all safeties to verify burner shutdown

INSPECTION NOTES:

Tested safety switches tested low water cut out switch tested relief valve Tested pressure switch

Run boiler

Inspected wiring



CSS TICKETS NEEDED:

