

Date: 9/22/2023

Region: 4A
FAC ID: NY070CSS No.: 94704
Maximo WO No.: 13668

Asset #: NA

Priority: Routine

Original Work Request:

Piping to fan coil unit in southwest work bay is leaking.

Description of Repairs Needed:

Labor and material to a.) isolate and drain the hot water supply and lines to the unit heater b.) remove the dielectric nut unions and piping that are leaking c.) replace the unions and piping with new unions and piping d.) recharge the lines and test for leaks and proper operation and as long as there is no leaks reinsulate the lines

Labor	Labor Hrs	Labor Rate	Total
Technician	20	\$ 100.00	\$ 2,000.00
		\$ -	\$ -

Material List:	Quantity	Cost	Total
Di-electric Union: Bronze, Press-Fit x FNPT, 2 in Copper Tube Size, 2 in Pipe Size	2	\$ 180.61	\$ 361.22
Tee: Copper, Press-Fit x Press-Fit x Press-Fit, 2 in x 2 in x 1/2 in Copper Tube Size	3	\$ 329.75	\$ 989.25
90 Degree Street Elbow: Copper, Press-Fit x FTG, 2 in x 2 in Copper Tube Size	4	\$ 67.93	\$ 271.73
Coupling No Stop: Copper, Press-Fit x Press-Fit, 2 in x 2 in Copper Tube Size	6	\$ 31.25	\$ 187.48
Tee: Copper, Press-Fit x Press-Fit x Press-Fit, 2 in x 2 in x 2 in Copper Tube Size	2	\$ 68.78	\$ 137.56
90 Degree Elbow: Copper, Press-Fit x Press-Fit, 2 in x 2 in Copper Tube Size	2	\$ 84.84	\$ 169.68
Reducer: Copper, Press-Fit x Press-Fit, 2 in x 1 in Copper Tube Size	4	\$ 63.13	\$ 252.52
Reducer: Copper, Press-Fit x Press-Fit, 2 in x 1 1/4 in Copper Tube Size	2	\$ 52.49	\$ 104.97
Tubing: Copper, 1/2 in, Type K, 10 ft, Straight	1	\$ 51.48	\$ 51.48
Tubing: Copper, 1 in, Type K, 10 ft, Straight	1	\$ 127.36	\$ 127.36
Tubing: Copper, 2 in, Type K, 10 ft, Straight	1	\$ 338.18	\$ 338.18
Ball Valve: 1/2 in Pipe, 1/2 in Tube, Full, 200 psi CWP, 0° to 250°F, Lever Handle	2	\$ 58.83	\$ 117.67
Pipe Insulation: Fits 2 in Pipe Size, 2 in Wall Thick, 0°F to 850°F, 8.7 Insulation Approx. R Value	4	\$ 47.15	\$ 188.61
Pipe Insulation Tape: 3 in Wd, 150 ft Lg, 0 to 150°F, Fiberglass	1	\$ 51.86	\$ 51.86

Equipment List:	Quantity	Cost	Total
ELECT SCISSOR LIFT	1	\$ 1,222.67	\$ 1,222.67
		\$ -	\$ -
		\$ -	\$ -

PM WO History:

NA

Estimate Summary:

Labor	Material	Equipment
\$2,000.00	\$ 3,349.58	\$1,222.67

Sub Total	G&A 12%	Fee 6%	Total Estimate
\$6,572.25	--	--	\$6,572.25

Note: G&A and Fee are not applied on top of work performed by Tidewater.

Prepared by:

Tidewater, Inc.

6625 Selknick Drive, Suite A

Elkridge, MD 21075

Prepared for:

CMI Management, Inc.

5285 Shawnee Road Suite 510

Alexandria, VA 22312-2334

Date: 9/22/2023

CSS #: 94704

FAC ID: NY070

WO #: 13668

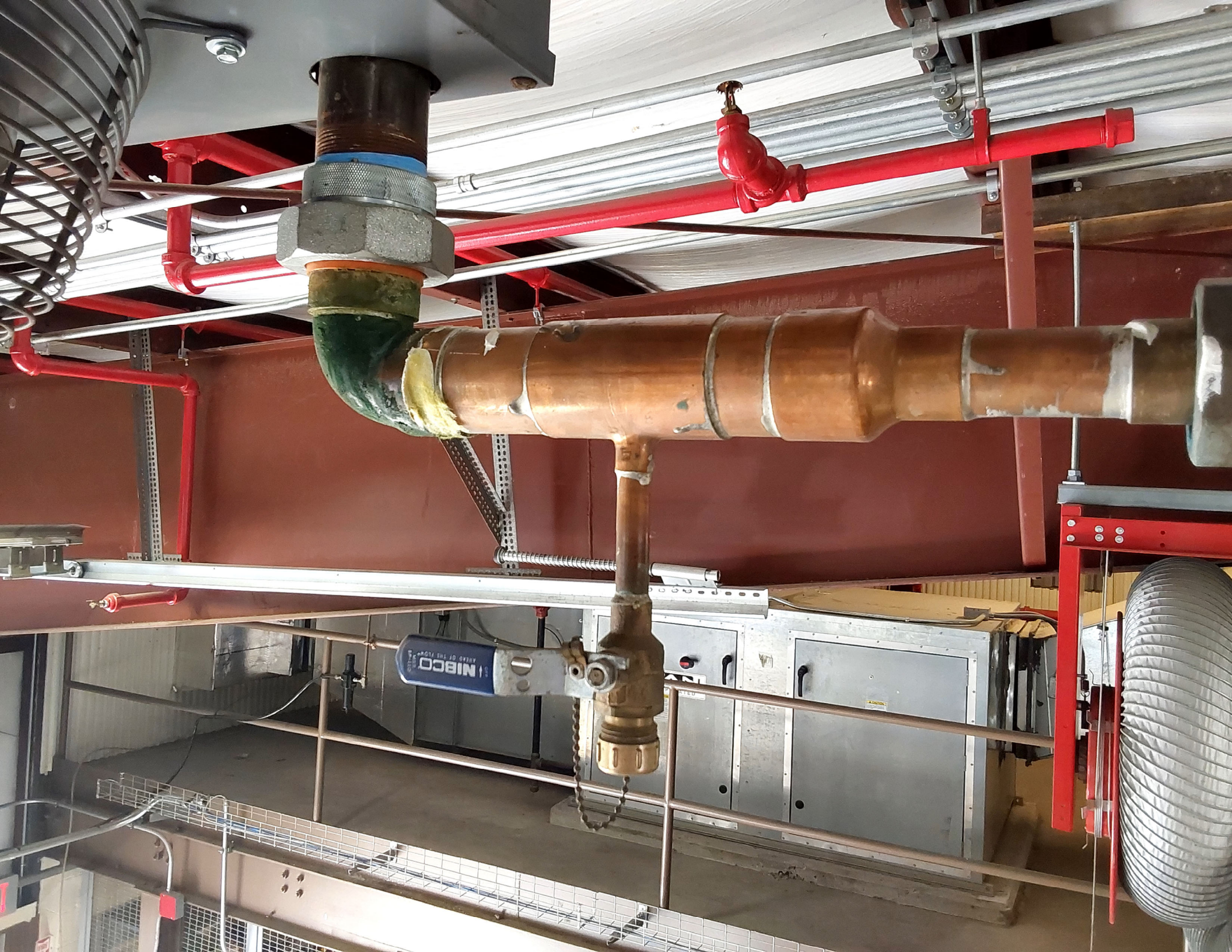
DESCRIPTION OF WORK

Labor and material to a.) isolate and drain the hot water supply and lines to the unit heater b.) remove the dielectric nut unions and piping that are leaking c.) replace the unions and piping with new unions and piping d.) recharge the lines and test for leaks and proper operation and as long as there is no leaks reinsulate the lines

LABOR	QTY	UNIT/RATE	TOTAL
Technician	20	\$100.00	\$2,000.00
		\$0.00	\$0.00
MATERIAL	QTY	UNIT/RATE	TOTAL
Di-electric Union: Bronze, Press-Fit x FNPT, 2 in Copper Tube Si	2	\$180.61	\$361.22
Tee: Copper, Press-Fit x Press-Fit x Press-Fit, 2 in x 2 in x 1/2 in	3	\$329.75	\$989.25
90 Degree Street Elbow: Copper, Press-Fit x FTG, 2 in x 2 in Cop	4	\$67.93	\$271.73
Coupling No Stop: Copper, Press-Fit x Press-Fit, 2 in x 2 in Copp	6	\$31.25	\$187.48
Tee: Copper, Press-Fit x Press-Fit x Press-Fit, 2 in x 2 in x 2 in C	2	\$68.78	\$137.56
90 Degree Elbow: Copper, Press-Fit x Press-Fit, 2 in x 2 in Copp	2	\$84.84	\$169.68
Reducer: Copper, Press-Fit x Press-Fit, 2 in x 1 in Copper Tube S	4	\$63.13	\$252.52
Reducer: Copper, Press-Fit x Press-Fit, 2 in x 1 1/4 in Copper Tu	2	\$52.49	\$104.97
Tubing: Copper, 1/2 in, Type K, 10 ft, Straight	1	\$51.48	\$51.48
Tubing: Copper, 1 in, Type K, 10 ft, Straight	1	\$127.36	\$127.36
Tubing: Copper, 2 in, Type K, 10 ft, Straight	1	\$338.18	\$338.18
Ball Valve: 1/2 in Pipe, 1/2 in Tube, Full, 200 psi CWP, 0° to 250°	2	\$58.83	\$117.67
Pipe Insulation: Fits 2 in Pipe Size, 2 in Wall Thick, 0°F to 850°F,	4	\$47.15	\$188.61
Pipe Insulation Tape: 3 in Wd, 150 ft Lg, 0 to 150°F, Fiberglass	1	\$51.86	\$51.86
EQUIPMENT	QTY	UNIT/RATE	TOTAL
ELECT SCISSOR LIFT	1	\$1,222.67	\$1,222.67
		\$0.00	\$0.00
		\$0.00	\$0.00
SUB-TOTAL COSTS:	LABOR TOTAL		\$2,000.00
	MATERIAL TOTAL		\$3,349.58
	EQUIPMENT TOTAL		\$1,222.67
TOTAL COST:			\$6,572.25

Accepted By: _____

Date: _____





LIFT HERE