



Date: 10/11/2023
Facility ID: PA035
Work Order #: 14052
Boiler ID: #1 6607

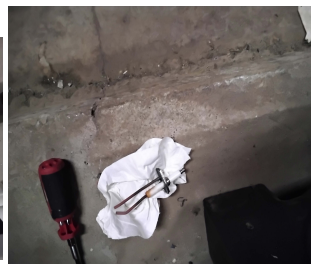
Seasonal Start Up - Boiler PM Inspection Worksheet

1. Verify full boiler
2. Test the safety/relief valve after startup (full pressure test)
3. Clean or replace the fuel filters
4. Clean the fuel nozzles
5. Inspect, clean and functionally test the flame scanner and flame safeguard relay
6. Clean and adjust the ignition electrode
7. Replace the vacuum tube in flame safeguard control, if applicable
8. Perform pilot turn down test
9. Verify proper water flow through the boiler
10. Perform visual combustion test and adjust the burner for maximum efficiency
11. Test all safeties to verify burner shutdown

Test out all safety switches tested low water cutoff and pressure switch

Cleaned igniters and checked flame good blue flame run boiler

Tested relief valve needs replaced



Relief valve needs replaced



*Relief valve replaced under ~~limit of liability~~
