

PREVENTATIVE MAINTENANCE PROGRAM CHECKLIST
UNIT HEATER, INFRA-RED, RADIANT, GAS

SITE AND BLDG #: WV024-01

MECHANIC SIGNATURE:

Andy Bird

DATE:

12-11-18

LOCATION/RM #:

START TIME:

8:30am

FINISH TIME:

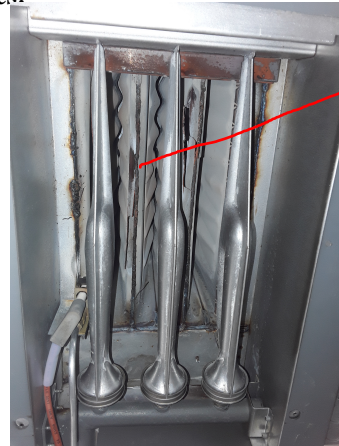
4PM

Site Location	WO #	Asset #	PM #	Manufacturer	Model Number	Serial #	Asset Description	Asset Location
WV024-01	6658	4507	PM-SA-4080	<i>Trane</i>	<i>GHND004 ADE1000E</i>	<i>A96G4 0393</i>	J-1502000-08 2-pc Unit Heater, Gas	<i>Mech Rm, Cage Area</i>
WV024-02	6676	4579	PM-SA-4135	<i>No personnel with keys available</i>			J-1502000-08 4-pc Unit Heater, Gas	

CHECK POINT	CHECKPOINT DESCRIPTION	TASK COMPLETE		NOTES/ ACTIONS (IF TASK COMPLETE IS CHECKED NO, PROVIDE EXPLANATION)
		YES	NO	
SPECIAL INSTRUCTIONS				
1	In addition to the procedure(s) outlined in this standard, the equipment manufacturer's recommended maintenance procedure(s) and/or instruction(s) shall be strictly adhered to.	✓		
2	Follow lock out/tag out procedures always. De-energize or discharge all hydraulic, electrical, mechanical, or thermal energy prior to beginning work.	✓		
TO BE PERFORMED AT EACH INSPECTION SERVICE				
1	For gas/oil heaters: 1. Remove access panels if applicable. 2. Check the fire box liner or refractory for cracks and leaks. 3. Check all gas lines for leaks. Repair as needed.	✓		
2	Clean dirt from heater, vacuuming is preferred.	✓		
3	Check operation of gas valve.	✓		
4	Check for gas leaks.	✓		

5	Check operation of thermostat.	✓		
6	If applicable, replace primary air intake filter.		✓	No Filters
7	As needed, clean spark electrode and reset gap, replace if necessary.	✓		
8	Inspect flue pipe and connections.	✓		
9	If applicable, inspect and clean outside air blower and blower intake.	✓		
10	Inspect unit for proper operation.	✓		
11	Inspect unit for overall condition and recommend for replacement or other needed repairs.	✓		

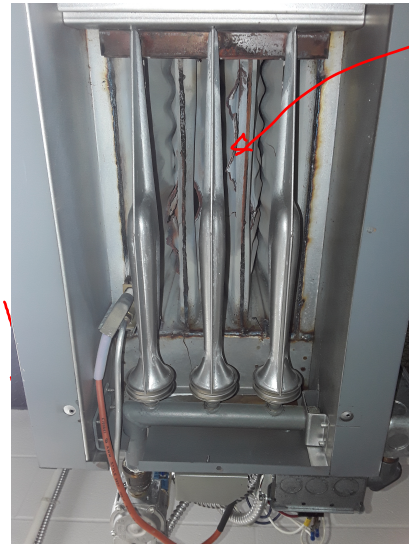
Note: The technician shall perform any repairs identified during PM up to \$250 (direct labor and direct material cost) per PM occurrence. For any deficiencies found exceeding \$250 open a corrective maintenance (CM) ticket and include the Asset #, WO #, photos, and a detailed description of the deficiency. To be performed by: HVAC Technician **Additional Notes:**



GUH-2 A-28
Cage area - Cracked
heat exchanger.
Out of Service.
CM Needed



Mech RM Heater
Asset # 4080
Cracked heat
exchanger.
Out of service
CM Needed



GUH-1 A-28
Cage area -
Cracked heat
exchanger.
Out of
Service.
CM
Needed.