

Financing available up to **24 Months*** on orders over \$200 [Learn More](#)

[Customer Service](#) ▾ [For the Pro](#) [Financing](#) [FREE Shipping Over \\$35*](#)



What are you looking for?

SEARCH

Need help?

1-800-934-9194



[My Account](#)



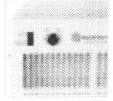
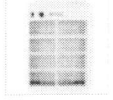
Cart | 0 Items

[Humidity Control](#) ▾ [Air Quality](#) ▾ [Heating & Cooling](#) ▾ [Floor Care](#) ▾ [Indoor Growing](#) ▾ [Shop By Concern](#) ▾ (

[Home](#) > [Dehumidifiers](#) > [Santa Fe Dehumidifiers](#) > [Santa Fe Advance90 Dehumidifier](#)

Santa Fe Advance90 Dehumidifier

Model: **4034180** SKU: **sa8105** ★★★★★ (388 Reviews) [Q&A \(15\)](#)



Price: \$1,379.99

Free 2 Day Delivery to [75150](#)

In Stock - Want it shipped today? Order in the next **5 Hours, 50 Minutes**

Quantity:



Add To Cart

**Or as low as
\$63.68 / Month ***

Buy Used: \$1,228.19 in Open-Box & Used

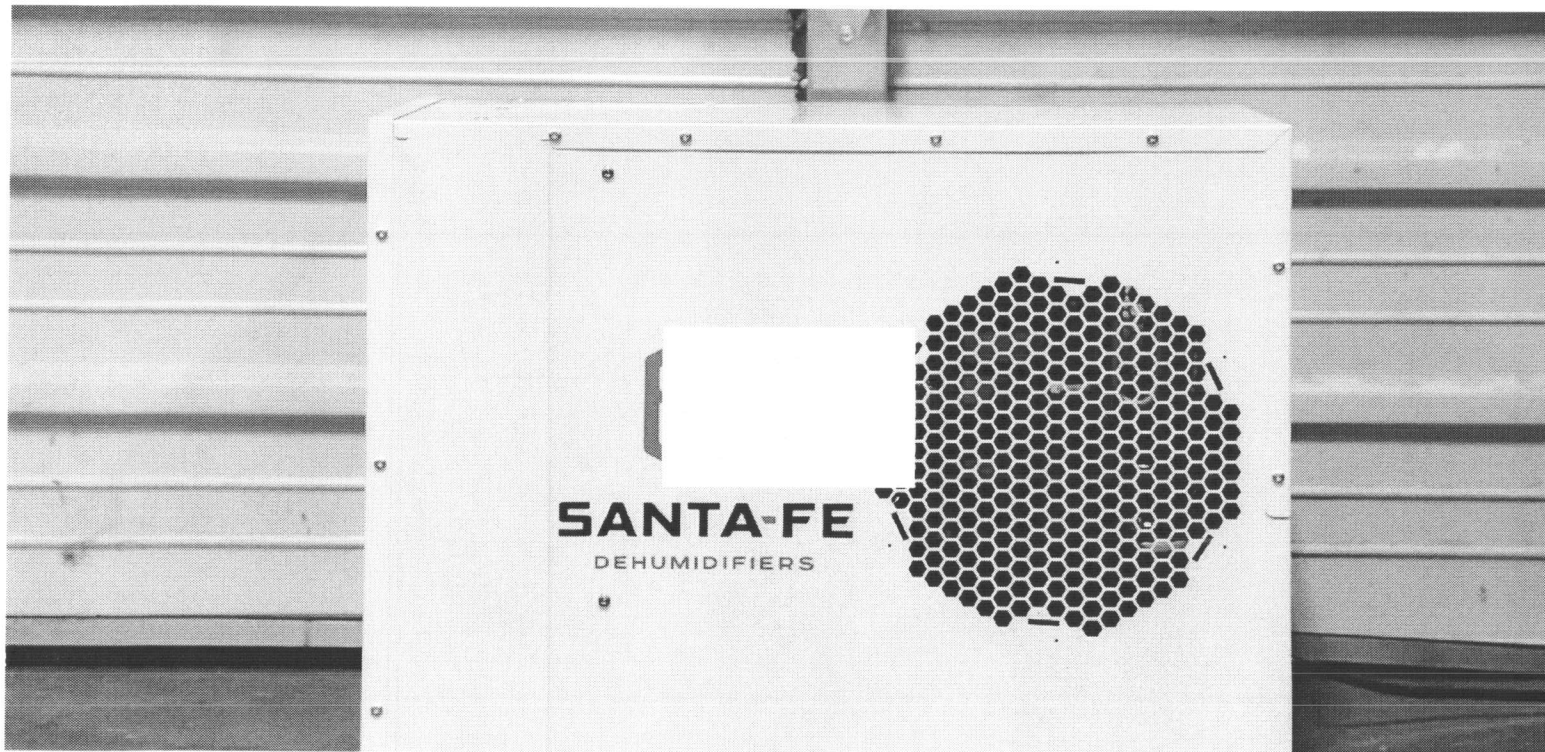
Additional Warranty Options

- ☒ No Extended Warranty
- ☐ 3-Year Appliance Warranty (Date-of-Purchase) +\$59.99
- ☐ 5-Year Appliance Warranty (Date-of-Purchase) +\$129.99

[Accessories](#)[Overview](#)[Specifications](#)[Recommended Items](#)[Customer Reviews](#)[Product Q&A](#)

Product Overview

Solve your crawl space humidity issues for good with the new Santa Fe Advance90 Dehumidifier. Formerly the Advance2, this is an updated version of the company's premier crawl space dehumidifier. It's a smarter, more efficient, and more effective solution for damp, mold-prone crawl spaces.



crawl spaces for years to come.

Dual Exhaust for Versatile Dehumidification

The Advance90 releases dry air out both sides of the unit, which has multiple benefits:

- Allows for use in multiple rooms by ducting one exhaust.
- Improved airflow across crawl spaces.
- Increased efficiency (6.1 pints/kWh).

Ideal Basement and Crawl Space Sizes

Below are Santa Fe's sizing suggestions for basements and crawl spaces based on how tightly-sealed your spaces are. It can cover up to:

- **Crawl Spaces: Very tightly sealed:** 3,000 square feet; **moderately sealed:** 2,600 square feet; **some leaks and imperfections:** 2,200 square feet.
- **Basements: Very tightly sealed:** 2,600 square feet; **moderately sealed:** 2,400 square feet; **some leaks and imperfections:** 2,200 square feet.

Flexible Installation

The horizontal design of the Advance90 offers you several options for installation. You can place it in a finished basement, an unfinished basement, or in your home's crawl space on open ground. With such a small physical profile (19.4 x 14.5 x 26 in.), you can easily install it wherever you need.

If you choose to place the Advance on open dirt or earth, it is best to first lay plastic down across the whole surface area and seal all outside vents. This will provide additional moisture insulation for your space and allow the system to work even more effectively.



What's In The Box?

- Santa Fe Advance90 Dehumidifier
- MERV 13 Filter
- 4 Leveling Feet
- Power Cord
- Drain Hose
- Owner's Manual

Manufacturer's Warranty

6-Year Warranty

Manufacturer's Literature

- Owner's Manual
- Data Sheet

Featured Accessories

Santa Fe
MERV 13 Dehumidifier
Filter (14x17.5x1.75)
Model: 4037722
\$27.00 - \$197.95
(2)

CHOOSE OPTIONS
>

Santa Fe
Optional Condensate
Pump
Model: 4022220
\$109.95
(34)

ADD TO CART +

For sturdy use, the dehumidifier comes with 4 leveling feet that can be adjusted to level the machine in your space. You can also add [6-inch risers](#) to enhance the draining.

Additional Features

- **Humidity Control Knob:** This function automatically maintains the humidity level that is ideal for your environment by cycling the unit on and off throughout the day.
- **Independent Fan Control:** A separate and dedicated fan control allows for continuous fan operation or operation only when the unit is actively removing moisture from the air.
- **MERV 13 Filter:** A MERV 13 filter captures microscopic allergens is especially effective in capturing mold. It also helps protect dehumidifier components from particles that may cause damage. You can purchase additional [MERV 13 filters here](#), or you can choose the [MERV 11 filters](#) that also fit this model.
- **Low-Temperature Operation:** Runs efficiently in temperatures between 49 and 95 degrees F. Auto defrost protects the unit from damaging frost buildup below 56 degrees.
- **Quiet Operation:** Double-walled, powder-coated steel housing make this new model quieter than the original.
- **Auto Restart:** Santa Fe dehumidifiers automatically restart following a power outage.

Santa Fe
Dehumidifier Risers
Model: 4039903
\$29.95

(11)

ADD TO CART +

Santa Fe
Small Hang Kit for
Dehumidifiers
Model: 4036695
\$76.00

(40)

ADD TO CART +

[View all accessories »](#)

Accessories for Customized Operation

Like all Santa Fe dehumidifiers, this large-capacity dehumidifier can be customized for your specific needs with the purchase of a variety of accessories.

Optional Condensate Pump

The Santa Fe Advance90 is equipped to drain collected moisture via gravity drain. However, a [condensate pump](#) is available when gravity draining is not possible or not ideal. The condensate pump gives you the option of running the drain hose upward and out through a window or through a doorway to your yard or garden.

Optional Duct Kit

This Santa Fe dehumidifier can be used as a standalone solution or ducted for more complex applications. For example, you may want to hide the unit away in a storage closet or other remote area and run ductwork to and from the treated space. Add the [ducting kit](#) for various ducting options.

Summary

This powerful Santa Fe Dehumidifier keeps your basement or crawl space mold- and mildew-free, eliminating 90 pints of moisture per day at AHAM conditions.

What Customers Love

- **Superior Efficiency:** This crawl space dehumidifier removes more moisture per kilowatt hour than many conventional residential dehumidifiers at the same or an even lower operating cost.
- **Reliable Long Life:** Solid internal construction and a heavy-duty cabinet contribute to years of reliable moisture control.

Consider This

- **Customizable Options:** Customize your dehumidifier to suit your space's unique needs. Add a condensate pump, a ducting kit, a remote humidistat, and [other accessories](#).

How It Works

The Santa Fe Advance90 Crawl Space Dehumidifier uses a refrigeration system to remove moisture from incoming air. Air is pulled into the unit through an inlet located on one end of its housing and cooled to below its dew point as it passes across an evaporator coil. As a result of this cooling process, moisture is condensed into a liquid and directed into the drain hose,

where it can be deposited into a nearby drain using the force of gravity.



Once the incoming air is cooled and dehumidified, it is used to pre-cool the next incoming air stream. This pre-cooling process increases the unit's efficiency by as much as 200%. Following the pre-cooling stage, processed air is reheated as it passes over a condenser coil and discharged back into your environment through dual exhaust vents on either side of the dehumidifier. Select your desired humidity level using the manual knob control. The unit's built-in humidistat automatically maintains the level of humidity.

Setting Up A Drain Trap

Santa Fe recommends setting up a drain trap when installing any of its horizontal dehumidifiers, including this one. This prevents air from moving back up through the hose and back-flowing water into the machine. This also prevents potential water leaks from the corners of each unit.

It's easy to create a drain trap using the included drain hose or a separate PVC trap. The inner diameter is 5/8 of one inch, and the outer diameter is 7/8 of one inch. Watch this [video](#) on how to create a drain trap for your Santa Fe dehumidifier to learn more.

Specifications

Residential Use	Basement, Crawl Space, Whole House
Practical Room Size 	Up to 2,600 sq. ft.
Pint Capacity 	90 pints
Height	19.4 in.
Width	14.5 in.
Depth	26 in.

Weight	80 lbs.
Water Container	No
Full Bucket Indicator/Auto Shutoff	No
Internal Condensate Pump	No
Continuous Drain Capable	Yes
Drain Hose Included	Yes
Drain Hose Length	8 ft.
Drain Hose Diameter	0.875 in.
Controls	Manual
Humidistat ?	Yes
Low Temperature Operation (41 degrees F and Under)	No
Automatic Defrost	Yes
Fan Operation ?	Can Run Continuously or Only When Dehumidifying
Number of Fan Speeds	1
Maximum Cubic Feet per Minute (CFM)	309 CFM
Maximum Noise Level	59 dB
Number of Filters	1
Filter Type	MERV-13 filter

Auto-Restart	Yes
Ductable	Yes
Refrigerant Type	R-410A
Casters	No
Maximum Amperage	5.7 Amps
Maximum Wattage	640 W
Voltage	110-120 V
Power Cord Length	9 ft.
Energy Star	No
Energy Factor	2.88 L/kWh
Lowest Operating Temperature	49 degrees
Wi-Fi Capable	No
Bluetooth Capable	No
Desiccant	No
Low Grain Refrigerant (LGR)	No
Color	White
Manufacturer-Suggested Room Size [?]	Up to 3,000 sq. ft.